



Not Invisible: Asian Pacific Islander Juvenile Arrests in Alameda County

Thao Le, M.P.H.
Isami Arifuku, D. Crim.
Cory Louis, M.P.A.
Moishe Krisberg, B.A.
Eric Tang, B.S.

Editing Contributions: Michell Nuñez, B.A.

July 2001
Asian Pacific Islander Youth Violence Prevention Center
Copyright by National Council on Crime and Delinquency, 2001

This publication was supported by Grant R49/CCR918619-01 from the Centers for Disease Control & Prevention. Its contents are solely the responsibility of the authors and do not necessarily represent the official views of the Centers for Disease Control & Prevention.

Table of Contents

| | |
|---|----|
| Summary of Findings | 5 |
| I. Introduction | 6 |
| II. Methodology..... | 7 |
| III. API Juvenile Population in Alameda County..... | 10 |
| IV. API Arrests Compared to Other Racial Groups..... | 11 |
| V. Trends in Juvenile Arrests by API Ethnic Group | 18 |
| VI. Ethnic Representation of Arrest Rates..... | 25 |
| VII. Ethnic Representation in Arrests, Adjudications, Institutional Placements, and Detention..... | 27 |
| VIII. API Female Arrests | 28 |
| IX. API Male Arrests | 35 |
| X. API Recidivism..... | 41 |
| XI. Conclusion..... | 44 |
| XII. References | 45 |

List of Tables

| | |
|---|----|
| Table 1, API Youths Referred to Probation Between 1991 and 2000 Before and After Recategorization | 8 |
| Table 2, Total Youth Population (10-17 years old) by Racial Group 1990 and 2000 | 10 |
| Table 3, Total Arrests and Corresponding Rates by Racial Group 1991 and 2000 | 11 |
| Table 4, Juvenile Property Offenses by Racial Group 1991-2000 | 13 |
| Table 5, Juvenile Offenses Against Persons by Racial Group 1991-2000 | 15 |
| Table 6, Juvenile Drug Offenses by Racial Group 1991-2000..... | 16 |
| Table 7, Juvenile Probation Violations by Racial Group 1991-2000 | 17 |
| Table 8, Juvenile Property Offenses by API Ethnic Group 1991-2000..... | 22 |
| Table 9, Juvenile Offenses Against Persons by API Ethnic Group 1991-2000..... | 23 |
| Table 10, Juvenile Drug Offenses by API Ethnic Group 1991-2000 | 24 |
| Table 11A, Juvenile Arrest Rate (Number of Arrests) by Race and API Ethnic Group 1991..... | 25 |
| Table 11B, Juvenile Arrest Rate (Number of Unique Youths) by Race and API Ethnic Group 1991..... | 26 |
| Table 12, Juveniles by Population, Arrests, Adjudications, and Placements 2000 | 27 |
| Table 13, Female Juvenile Property Offenses by API Ethnic Group 1991-2000 | 32 |
| Table 14, Female Juvenile Offenses Against Persons by API Ethnic Group 1991-2000..... | 33 |
| Table 15, Female Juvenile Drug Offenses by API Ethnic Group 1991-2000..... | 34 |
| Table 16, Male Juvenile Property Offenses by API Ethnic Group 1991-2000..... | 38 |
| Table 17, Male Juvenile Offenses Against Persons by API Ethnic Group 1991-2000 | 39 |
| Table 18, Male Juvenile Drug Offenses by API Ethnic Group 1991-2000..... | 39 |
| Table 19, 6-Month, 12-Month, and 24-Month Recidivism, Asian Pacific Islander Juvenile Arrest Population 1998..... | 42 |
| Table 20, 6-Month Recidivism by Offense Type for Asian Pacific Islander Juvenile Arrest Population 1998..... | 43 |

List of Figures

| | |
|---|----|
| Figure 1, Total Juvenile Arrests by Ethnicity | 11 |
| Figure 2, Total Juvenile Felony Arrests by Offense Type 1991-2000..... | 12 |
| Figure 3, Total Juvenile Misdemeanor/Probation Violation Arrests by Offense Type 1991-2000 | 13 |
| Figure 4A, Juvenile Arrests by Asian Ethnic Group 1991-2000 | 18 |
| Figure 4B, Pacific Islander Juvenile Arrests 1991-2000 | 19 |
| Figure 5, Asian Pacific Islander Juvenile Felony Arrests by Offense Type 1991-2000..... | 20 |
| Figure 6, Asian Pacific Islander Juvenile Misdemeanor/Probation Violation Arrests by Offense Type 1991-2000..... | 21 |
| Figure 7, Female Juvenile Arrests by Ethnicity 1991-2001 | 28 |
| Figure 8A, Female Juvenile Arrests by Asian Ethnic Group 1991-2000 | 29 |
| Figure 8B, Female Pacific Islander Juvenile Arrests 1991-2000 | 29 |
| Figure 9, Female Asian Pacific Islander Juvenile Felony Arrests by Offense Type 1991-2000..... | 30 |
| Figure 10, Female Asian Pacific Islander Juvenile Misdemeanor/Probation Violation Arrests by Offense Type 1991-2000..... | 31 |
| Figure 11, Male Juvenile Arrests by Ethnicity 1991-2000 | 35 |
| Figure 12A, Male Juvenile Arrests by Asian Ethnic Group 1991-2000..... | 36 |
| Figure 12B, Male Pacific Islander Juvenile Arrests, 1991-2000..... | 36 |
| Figure 13, Male Asian Pacific Islander Juvenile Felony Arrests by Offense Type 1991-2000..... | 37 |
| Figure 14, Male Asian Pacific Islander Juvenile Misdemeanor/Probation Violation Arrests by Offense Type, 1991-2000..... | 37 |

Asian Pacific Islander Juvenile Arrests in Alameda County

Summary of Findings

- Asian Pacific Islander (API) juvenile arrests are up 44.1 percent since 1991. Considering that the API youth population has grown more than 66 percent, the actual rate at which these youths are committing crimes has dropped 13.2 percent (from 26.6 to 23.1 per 1000);
- Of the Asian ethnic groups, the increase in arrests is primarily attributable to a rise in Cambodian (183.3 percent), Korean (145.5 percent), Asian Indian (112.8 percent), Chinese (110.2 percent), and Filipino (31.5 percent) arrests (see Figures 4A and 4B);
- APIs were responsible for approximately 2 out of 25 juvenile arrests in Alameda County during 1991-2000 (refer to Section IV);
- For rates defined as *number of unique individuals arrested* per thousands, Samoans (112.4) had the highest followed by Blacks (97.2), Laotians (73.8) and Vietnamese (41.9) (refer to Section VI);
- Vietnamese and Filipino juveniles are responsible for nearly half of all API arrests (refer to Section V);
- Of the Asian ethnic groups, Vietnamese youths are most represented in arrest, adjudication and institutionalization statistics (refer to Section VII);
- While the total number of felony property arrests went up 8 percent from 1991 to 2000, API youths experienced a 36 percent increase, the largest increase in felony property arrests for any specific race;
- The most common offense type within the felony category for both API males and females was property (refer to Sections VIII and IX);
- Arrest statistics for API females have increased dramatically, up 680.6 percent from 1991, while Hispanic, White, and Black females have increased 177.1 percent, 101 percent, and 91.2 percent, respectively (refer to Section VIII);
- Within the API group for females, Filipinos were responsible for the largest percent of arrests, followed by Chinese and Vietnamese interchangeably depending on year (refer to Section VIII);
- Overall, API males experienced an 18.6 percent increase in arrests from 1991 to 2000. This was however offset by decreases in Laotian (-16.9 percent), Vietnamese (-11.7 percent), and Filipino (-7.2 percent) arrests (refer to Section IX);
- Within the API group for males, Vietnamese were responsible for a large percentage of the arrests, followed by Filipinos, Laotians, and Chinese interchangeably depending on the year (refer to Section IX); and
- Recidivism figures for Southeast Asian and Pacific Islander youths are higher than for overall APIs in the aggregate (refer to Section X).

I. Introduction

The Asian Pacific Islander (API) *racial* group encompasses tremendous diversity, incorporating well over 40 different *ethnic* groups. While the U.S. Census Bureau disaggregates the Asian racial group into various ethnic groups, most other official statistics do not. Also, systems vary in terms of which API ethnic group classifications are used, and is often true within the juvenile justice system. The Federal Bureau of Investigation's Uniform Crime Reporting Program and the National Crime Victimization Survey, for instance, report APIs within the "Other" racial category. There is limited presentation of data by the Asian category and scant to almost none for the different Asian ethnic groups. As such, national trends regarding API juvenile arrests may be incomplete or approximated at best.

In California, the state with the largest number of APIs, there are wide inconsistencies in the ways different systems (e.g., health, education, court, etc.) report data by racial/ethnic group. Even within a particular system like law enforcement, there are vast regional differences (e.g., County A versus County B) in terms of sensitivity and capability in capturing ethnic data. The California Department of Justice recently expanded its API categories from Chinese, Japanese, Filipino, and Pacific Islander (which they had used since 1985) to include Cambodian, Guamanian, Korean, Laotian, Samoan, Hawaiian, Vietnamese, and Other Asian beginning in 1991. However, it is this "Other Asian" category that accounts for the majority of the Asian classification. And although California's system classifies a number of API ethnic groups, in contrast to the FBI's system, it still does not account for all of the diversity within the API community. The newest API immigrant groups like Thais, Malaysians, and Pakistanians are rarely accurately considered.

The danger in inconsistent data collection and presentation of official arrest data is that it contributes toward a distorted view of APIs involved in crime. Without data disaggregated by ethnic groups, misunderstanding and, at worst, racial stereotypes (like model minority or gang bangers) continue to persist. The purpose of this report is to present as complete and as accurate information currently available about API juveniles' arrests, and as much as possible disaggregated by subethnic groups, in Alameda County.

The data contained in this report are from secondary analyses, that is, analyses of data that were originally collected by another source, the Alameda Juvenile Probation Department. What differentiates these analyses is that many of the "Other" and "Other Asian" youth categorizations were reclassified into specific ethnic groups using the youth's last name. These analyses allow for a clearer understanding of the subtle differences in arrests among various API ethnic groups. Certainly, there are limitations to this method (discussed further in the methodology section) and the extent to which the data accurately and completely reflect reality is still limited; however, the information presented is the second in the "Not Invisible" series, illustrating closest approximation to date for API juvenile arrests in any county on the mainland.

II. Methodology

This report is based on data that were originally collected by the Alameda County Probation Department. The data reflect all juvenile arrest referrals to probation (i.e., official court referral) in the county of Alameda from 1991-2000 and are presented in two ways: number of arrests which are reports of events, not unduplicated individuals, and number of unique youths which are reports of unique youths for the given year. For the unique youth determination, the most serious offense the youth committed for that year is counted. So, if a youth was arrested for five different offenses for a given year, s/he was counted only once with the most serious offense as the event included. Number of arrests is a rough indication of the extent and nature of juvenile crime (not necessarily number of crimes committed since there are some events which do not come to the attention of law enforcement) and/or law enforcement practices, while unique youth reflects the number of individuals involved in delinquent activity or interfacing with juvenile justice agencies. This report primarily focuses on the number of arrests; the number of unique youths is considered in calculating rates and/or recidivism measures.

The population aged 10-17 represents the “at-risk” population and is used as the baseline for defining proportional representation. “Race” and “racial group” as used in this report reflect the socially created categories commonly used to differentiate groups of people in the U.S. (such as “Asian,” “American Indian,” “Black,” “Hispanic,” “White,” and “Other”). These are the commonly used categories to collect statistics. In contrast, “ethnicity” and “ethnic group” more specifically identify a people’s nationality, place of ancestor’s origin, and/or cultural background (such as “Chinese,” “Japanese,” “Korean,” etc.).

Data reflect arrests from 1991 to 2000. Although we received 1990 data, they were not used because data were purged by Alameda County following these two rules:

1. California Youth Authority cases are purged when the person is over 30 and it has been more than 10 years after the LAST offense; or
2. The person is over 18 years old and it has been 10 years since the LAST offense.

These purge rules would result in most cases being purged by the 10th year. Therefore, resulting data show all juvenile contact data from 1991 – 2000.

A. Race and API Ethnicity

Many of the youths who were categorized in the race/ethnic field as “Other Asian” and “Other” can be classified into a specific race/ethnic group by examining the youth’s last name. A database of common Asian Pacific Islander surnames and the race/ethnic group that coincides with that surname was developed for the purpose of this project. Many Asian surnames can be used to identify multiple races/ethnicities, but our database reflected the most commonly used categorization of race or ethnicity corresponding to a given surname. The names in the database were collected from various sources including five Internet sites and two resource manuals (Rhoda L. Agin et al., 1992; and Him Mark Lai, 1998), then compiled into one central database. Names were also added to the database by searching the given data set for names already categorized as a specific Asian race/ethnicity and cross-checking with names in the database. Commonly used names not included in the database were added and continuously updated with new data sets.

Table 1 below shows the effect of reclassification of API youths in the Alameda County Probation database for years 1991-2000. Before reclassification, “Other Asian” comprised 77 percent of the API youth population; after reclassification, “Other Asian” comprised 10 percent of the API youth population.

As a collective group, “Asian” and “API” are used interchangeably throughout the report except where noted.

Table 1
Alameda County
API Youths Referred to Probation Between 1991 and 2000
Before and After Recategorization

| BEFORE | | AFTER | |
|--------------------------------|--------------|--------------------------------|--------------|
| Asian Indian | 36 | Asian Indian | 57 |
| Cambodian | 3 | Cambodian | 139 |
| Chinese | 55 | Chinese | 596 |
| Filipino | 321 | Filipino | 677 |
| Hawaiian | 78 | Hawaiian | 88 |
| Japanese | 4 | Japanese | 32 |
| Korean | 5 | Korean | 131 |
| Laotian | 12 | Laotian | 343 |
| Pacific Islander | 32 | Pacific Islander | 35 |
| Samoan | 9 | Samoan | 83 |
| Vietnamese | 101 | Vietnamese | 845 |
| Other Asian | 2,179 | Other Asian | 384 |
| Total Unique API Youths | 2,820 | Total Unique API Youths | 3,701 |

Source: Alameda Juvenile Probation Department

This method allowed for additional cases to be included in the analysis of API arrests in Alameda County. The total number of API youths engaged in the Alameda juvenile justice system increased as youths with Asian surnames were reclassified from the general “Other” racial group and “Other Asian” category into specific API ethnic groups (which accounts for the increase in the total number of unique Asian youths after recategorization shown in Table 1). This recategorization allowed for a larger sample size, and in turn, clearer trends and conclusions regarding API juveniles’ arrests in Alameda County.

There are however several limitations to this method that must be considered. One major consideration is that it does not account for multi-ethnicity or the nuances within particular ethnic groups (e.g., ethnic Chinese in Vietnam versus mainland Chinese). Also, youths with API surnames may not necessarily be of API descent (e.g., adoptions), or API youths missed because of common shared surnames with other ethnic groups (e.g., Filipinos having some surnames similar to Spanish/Hispanic group). Considering that there is relatively scant information on APIs within the juvenile justice system, the benefits from this recategorization and resulting analysis outweigh the above-noted limitations.

B. Criminal Offenses

Offenses were categorized based on the state of California’s Penal Code. The following list defines each type of criminal offense included in this study:

Property Offenses:

Felony: arson, burglary, theft, motor vehicle theft, forgery, and bookmaking.

Misdemeanor: petty theft, other theft, vandalism, hit and run property, forgery, trespassing, malicious mischief, and joyriding.

Offenses Against Persons:

Felony: homicide, vehicular or non-vehicular manslaughter, rape, lewd or lascivious behavior, other sexual violations, robbery, assault, kidnapping, and hit and run.

Misdemeanor: minor assault, lewd or lascivious behavior, annoying children.

Drug Offenses:

Felony: possession or selling of dangerous drugs/narcotics, other felony drug violations, and driving under the influence.

Misdemeanor: minor possession or selling of drugs/narcotics, other drug law violations, minor driving under the influence, and liquor law violations.

Weapons Offenses:

Felony: weapons.

Misdemeanor: minor weapons.

Other Offenses:

Felony: escape and other.

Misdemeanor: obscene matter, indecent exposure, disorderly conduct, disturbing the peace, contributing to delinquency of minor, gambling, drunk, prostitution, traffic, city/county ordinances, and other.

Probation Violations:

Probation and technical violations.

C. Scope of Study

As stated in the introduction, the focus of this study is Asian Pacific Islander Juvenile Arrests in Alameda County. Juveniles or the youth population, are used interchangeably, and are defined as people between the ages of 10 to 17. This report focuses on a specific age group (youths age 10 to 17), specific racial and ethnic groups (Asian Pacific Islanders), a specific region (Alameda County), and a specific activity (arrests). Because the number of cases analyzed is restricted within this relatively small scope of study, the tables and figures presented in this report may exaggerate small fluctuations. Therefore, the emphasis of this study is on overall trends during the time period between 1991 and 2000.

III. API Juvenile Population in Alameda County

API racial and ethnic groups are growing throughout the United States—Alameda County is no exception. This is especially true of the youth population, which during the last decade (1990-2000) has increased 33.4 percent (see Table 2). API comprises the third largest youth population of any racial group and is the fastest growing youth population in Alameda County.

Table 2
Alameda County
Total Youth Population (10-17 years old) by Racial Group
1990 and 2000

| ETHNICITY | 1990 | % TOTAL* | 2000 | % TOTAL* | % CHANGE |
|--------------|----------------|--------------|----------------|--------------|-------------|
| Amer. Indian | 710 | 0.6 | 693 | 0.4 | -2.4 |
| API | 20,456 | 16.9 | 33,975 | 21.0 | 66.1 |
| Black | 26,204 | 21.6 | 31,989 | 19.8 | 22.1 |
| Hispanic | 22,826 | 18.8 | 34,664 | 21.4 | 51.9 |
| White | 50,918 | 42.0 | 60,357 | 37.3 | 18.5 |
| Total | 121,114 | 100.0 | 161,678 | 100.0 | 33.4 |

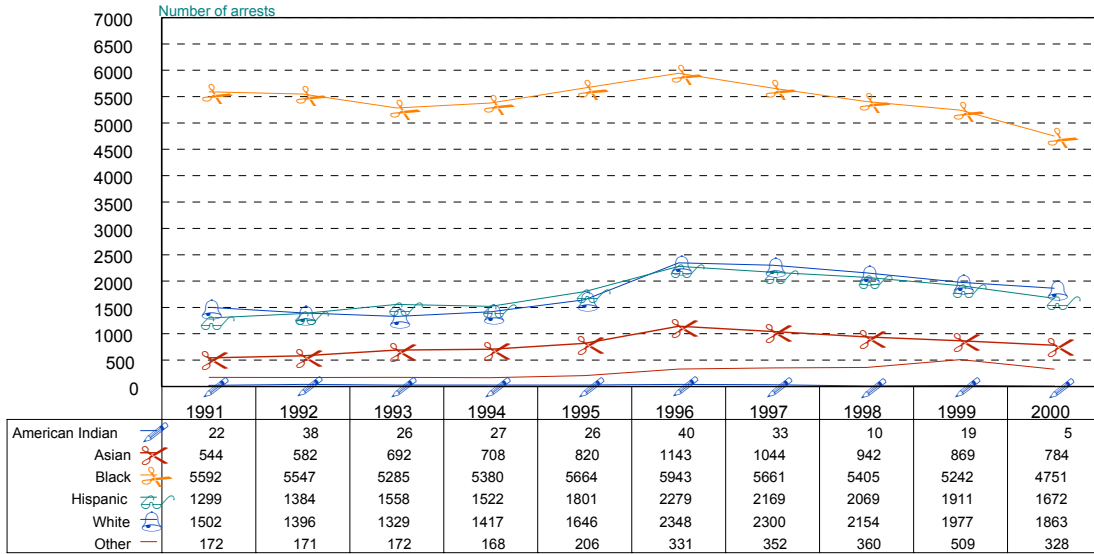
Source: California Department of Finance

*All percentages may not add up to 100 due to rounding.

IV. API Arrests Compared to Other Racial Groups

This section focuses on juvenile arrest trends for APIs compared to other racial groups in Alameda County from 1991 to 2000.

Figure 1
Alameda County
Total Juvenile Arrests by Ethnicity
1991 - 2000



Source: Alameda County Juvenile Probation Department

While the nationwide, juvenile arrest decreased in the last decade (Snyder, 1999), for the same period, Alameda County's juvenile arrests increased by 3 percent. This is largely attributable to increases in API (44.1 percent), Hispanic (28.7 percent), and White (24 percent) arrests (see Figure 1 above). Asians/APIs comprised between 6 percent (1991) and 9.5 percent (1996) of the total juvenile arrests.

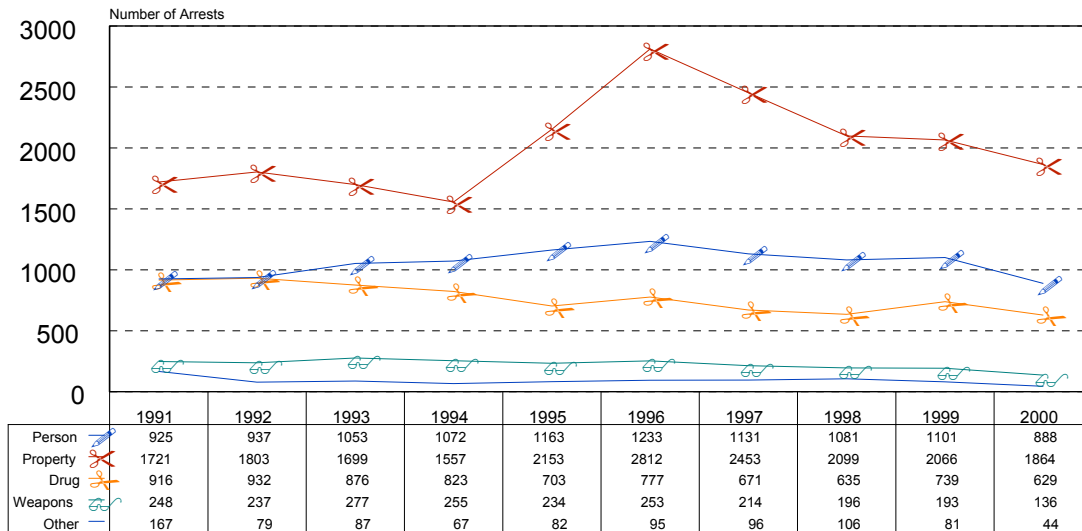
Table 3 shows that although the third largest racial group in Alameda County (as noted in Section III), API youths have the lowest arrest rate at 23.1 arrests per 1,000 in 2000. Even while the number of youths being arrested has increased, the actual rate has decreased (due to increases in population).

Table 3
Alameda County
Total Arrests and Corresponding Rates by Racial Group
1991 and 2000

| Ethnicity | 1991 ARREST RATE | | | 2000 ARREST RATE | | |
|-----------|------------------|--------------|-----------------|------------------|--------------|------------------|
| | # Arrests | Youths 10-17 | Rate (per 1000) | #Arrests | Youths 10-17 | Rate (per 1,000) |
| API | 544 | 20,456 | 26.6 | 784 | 33,975 | 23.1 |
| Black | 5,592 | 26,204 | 213.4 | 4,751 | 31,989 | 148.5 |
| Hispanic | 1,299 | 22,826 | 56.9 | 1,672 | 34,664 | 48.2 |
| White | 1,502 | 50,918 | 29.5 | 1,863 | 60,357 | 30.9 |
| Total | 9,131 | 121,114 | 75.4 | 9,403 | 161,678 | 58.2 |

Source: Alameda County Juvenile Probation Department; California Department of Finance

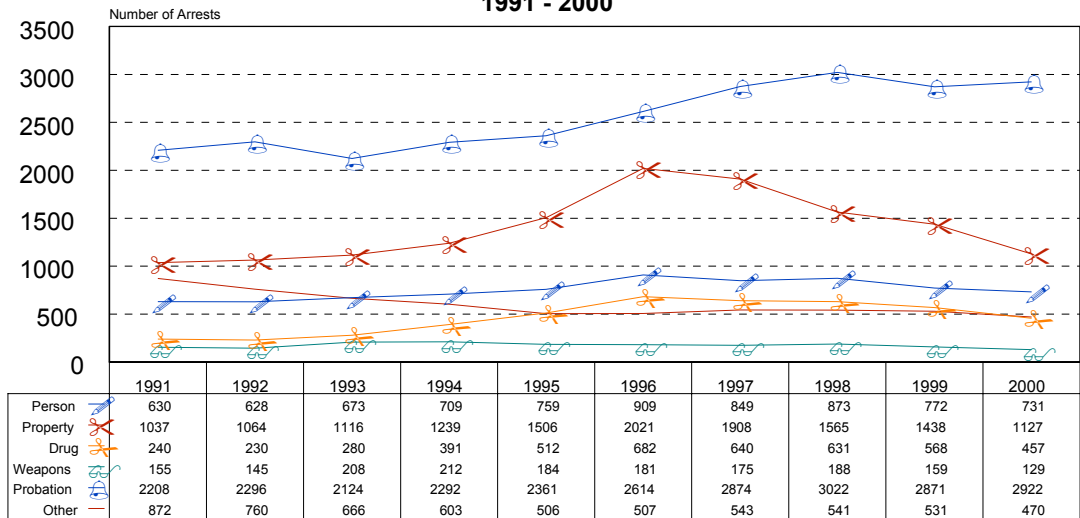
Figure 2
Alameda County
Total Juvenile Felony Arrests by Offense Type
1991 - 2000



Source: Alameda County Juvenile Probation Department

Between 1991 and 2000, the majority of juvenile felony arrests were made for property offenses (52.3 percent in 2000), followed by crimes against persons (24.9 percent in 2000) and drug offenses (17.7 percent in 2000) (see Figure 2). Compared to 1991 figures, these 2000 data represent a decrease of 31.3 percent for drug offenses and 4 percent for crimes against persons, and an increase of 8.3 percent for property offenses.

Figure 3
Alameda County
Total Juvenile Misdemeanor and Probation Violation Arrests
by Offense Type
1991 - 2000



Source: Alameda County Juvenile Probation Department

In 2000, the majority of juvenile misdemeanor arrests were made for property offenses (19.3 percent) followed by offenses against persons (12.5 percent) (see Figure 3). Probation violations were considered with the misdemeanor category. There were more arrests for probation violations than for the various types of misdemeanor offenses.

A. Property Offenses

In 2000, APIs accounted for 13 percent of the total juvenile property *felonies* in Alameda County (see Table 4). Again, these percentages are less than their relative proportion of the total youth population. Similarly, Whites account for 17.5 percent of felony property offenses while comprising over one third of the youth population. In contrast, Black youths are overrepresented based on their total number of arrests (48.8 percent) and the size of their population (approximately 17 percent of the total population, refer back to Table 2). The data also show that API property felony offenses have increased almost 36 percent over the past decade, which is the second highest increase (after Other). It is important to note, however, that juvenile property felonies in the “Other” racial category (which does not include youths with Asian surnames) dramatically increased (75 percent) during this same period, possibly due to the multiracial population or identification as multiracial increasing.

In terms of *misdemeanor* property arrests, Blacks accounted for a third to nearly half, followed by Whites and Hispanics (see Table 4). APIs accounted for roughly 10 percent.

Table 4
Alameda County
Juvenile Property Offenses by Racial Group
1991 - 2000

| FELONY PROPERTY | | | | | | | | | | | | | |
|-----------------|-----------|-----------------|-----|-----------|------|-----------|------|-----------|------|------------|------|-----------|-----|
| Year | Total No. | American Indian | | API | | Black | | Hispanic | | White | | Other | |
| | | No. | % | No. | % | No. | % | No. | % | No. | % | No. | % |
| 1991 | 1721 | 8 | 0.5 | 179 | 10.4 | 783 | 45.5 | 327 | 19.0 | 384 | 22.3 | 40 | 2.3 |
| 1992 | 1803 | 12 | 0.7 | 214 | 11.9 | 917 | 50.9 | 296 | 16.4 | 327 | 18.1 | 37 | 2.1 |
| 1993 | 1699 | 5 | 0.3 | 243 | 14.3 | 843 | 49.6 | 316 | 18.6 | 251 | 14.8 | 41 | 2.4 |
| 1994 | 1557 | 4 | 0.3 | 191 | 12.3 | 785 | 50.4 | 306 | 19.7 | 239 | 15.4 | 32 | 2.1 |
| 1995 | 2153 | 9 | 0.4 | 268 | 12.4 | 1178 | 54.7 | 342 | 15.9 | 300 | 13.9 | 56 | 2.6 |
| 1996 | 2812 | 6 | 0.2 | 451 | 16.0 | 1380 | 49.1 | 459 | 16.3 | 435 | 15.5 | 81 | 2.9 |
| 1997 | 2453 | 10 | 0.4 | 326 | 13.3 | 1178 | 48.0 | 423 | 17.2 | 436 | 17.8 | 80 | 3.3 |
| 1998 | 2099 | 3 | 0.1 | 273 | 13.0 | 972 | 46.3 | 345 | 16.4 | 434 | 20.7 | 72 | 3.4 |
| 1999 | 2066 | 2 | 0.1 | 318 | 15.4 | 953 | 46.1 | 337 | 16.3 | 383 | 18.5 | 73 | 3.5 |
| 2000 | 1864 | 0 | 0.0 | 243 | 13.0 | 909 | 48.8 | 316 | 17.0 | 326 | 17.5 | 70 | 3.8 |
| % Change | 8 | -100 | | 36 | | 16 | | -3 | | -15 | | 75 | |

| MISDEMEANOR PROPERTY | | | | | | | | | | | | | |
|----------------------|-----------|-----------------|-----|-----------|------|-----------|------|----------|------|-----------|------|-----------|-----|
| Year | Total No. | American Indian | | API | | Black | | Hispanic | | White | | Other | |
| | | No. | % | No. | % | No. | % | No. | % | No. | % | No. | % |
| 1991 | 1037 | 2 | 0.2 | 101 | 9.7 | 449 | 43.3 | 181 | 17.5 | 278 | 26.8 | 26 | 2.5 |
| 1992 | 1064 | 0 | 0.0 | 96 | 9.0 | 486 | 45.7 | 207 | 19.5 | 253 | 23.8 | 22 | 2.1 |
| 1993 | 1116 | 2 | 0.2 | 105 | 9.4 | 466 | 41.8 | 229 | 20.5 | 289 | 25.9 | 25 | 2.2 |
| 1994 | 1239 | 1 | 0.1 | 135 | 10.9 | 553 | 44.6 | 265 | 21.4 | 257 | 20.7 | 28 | 2.3 |
| 1995 | 1506 | 6 | 0.4 | 128 | 8.5 | 688 | 45.7 | 318 | 21.1 | 325 | 21.6 | 41 | 2.7 |
| 1996 | 2021 | 4 | 0.2 | 222 | 11.0 | 721 | 35.7 | 388 | 19.2 | 619 | 30.6 | 67 | 3.3 |
| 1997 | 1908 | 3 | 0.2 | 206 | 10.8 | 722 | 37.8 | 364 | 19.1 | 547 | 28.7 | 66 | 3.5 |
| 1998 | 1565 | 1 | 0.1 | 151 | 9.6 | 574 | 36.7 | 324 | 20.7 | 452 | 28.9 | 63 | 4.0 |
| 1999 | 1438 | 0 | 0.0 | 172 | 12.0 | 507 | 35.3 | 265 | 18.4 | 408 | 28.4 | 86 | 6.0 |
| 2000 | 1127 | 0 | 0.0 | 127 | 11.3 | 433 | 38.4 | 195 | 17.3 | 338 | 30.0 | 34 | 3.0 |
| % Change | 9 | -100 | | 26 | | -4 | | 8 | | 31 | | 22 | |

*All percentages may not add up to 100 percent due to rounding.
Source: Alameda County Juvenile Probation Department

B. Crimes Against Persons

Table 5
Alameda County
Juvenile Offenses Against Persons by Racial Group
1991 – 2000

| FELONY AGAINST PERSONS | | | | | | | | | | | | | |
|------------------------|-----------|-----------------|-----|-----|-----|-------|------|----------|------|-------|------|-------|-----|
| Year | Total No. | American Indian | | API | | Black | | Hispanic | | White | | Other | |
| | | No. | % | No. | % | No. | % | No. | % | No. | % | No. | % |
| 1991 | 925 | 1 | 0.1 | 32 | 3.5 | 635 | 68.6 | 109 | 11.8 | 123 | 13.3 | 25 | 2.7 |
| 1992 | 937 | 2 | 0.2 | 36 | 3.8 | 611 | 65.2 | 133 | 14.2 | 133 | 14.2 | 22 | 2.3 |
| 1993 | 1053 | 2 | 0.2 | 45 | 4.3 | 671 | 63.7 | 186 | 17.7 | 124 | 11.8 | 25 | 2.4 |
| 1994 | 1072 | 5 | 0.5 | 79 | 7.4 | 705 | 65.8 | 142 | 13.2 | 125 | 11.7 | 16 | 1.5 |
| 1995 | 1163 | 5 | 0.4 | 106 | 9.1 | 706 | 60.7 | 180 | 15.5 | 139 | 12.0 | 27 | 2.3 |
| 1996 | 1233 | 5 | 0.4 | 105 | 8.5 | 724 | 58.7 | 208 | 16.9 | 158 | 12.8 | 33 | 2.7 |
| 1997 | 1131 | 1 | 0.1 | 92 | 8.1 | 650 | 57.5 | 226 | 20.0 | 139 | 12.3 | 23 | 2.0 |
| 1998 | 1081 | 0 | 0.0 | 86 | 8.0 | 591 | 54.7 | 217 | 20.1 | 165 | 15.3 | 22 | 2.0 |
| 1999 | 1101 | 0 | 0.0 | 79 | 7.2 | 631 | 57.3 | 192 | 17.4 | 154 | 14.0 | 45 | 4.1 |
| 2000 | 888 | 2 | 0.2 | 60 | 6.8 | 506 | 57.0 | 146 | 16.4 | 150 | 16.9 | 24 | 2.7 |
| % Change | -4 | 100 | | 88 | | -20 | | 34 | | 22 | | -4 | |

| MISDEMEANOR AGAINST PERSONS | | | | | | | | | | | | | |
|-----------------------------|-----------|-----------------|-----|-----|-----|-------|------|----------|------|-------|------|-------|-----|
| Year | Total No. | American Indian | | API | | Black | | Hispanic | | White | | Other | |
| | | No. | % | No. | % | No. | % | No. | % | No. | % | No. | % |
| 1991 | 630 | 1 | 0.2 | 21 | 3.3 | 363 | 57.6 | 121 | 19.2 | 112 | 17.8 | 12 | 1.9 |
| 1992 | 628 | 4 | 0.6 | 25 | 4.0 | 393 | 62.6 | 70 | 11.1 | 123 | 19.6 | 13 | 2.1 |
| 1993 | 673 | 2 | 0.3 | 37 | 5.5 | 369 | 54.8 | 121 | 18.0 | 129 | 19.2 | 15 | 2.2 |
| 1994 | 709 | 2 | 0.3 | 43 | 6.1 | 394 | 55.6 | 113 | 15.9 | 147 | 20.7 | 10 | 1.4 |
| 1995 | 759 | 2 | 0.3 | 40 | 5.3 | 404 | 53.2 | 156 | 20.6 | 143 | 18.8 | 14 | 1.8 |
| 1996 | 909 | 4 | 0.4 | 53 | 5.8 | 439 | 48.3 | 181 | 19.9 | 206 | 22.7 | 26 | 2.9 |
| 1997 | 849 | 3 | 0.4 | 82 | 9.7 | 409 | 48.2 | 156 | 18.4 | 177 | 20.8 | 22 | 2.6 |
| 1998 | 873 | 0 | 0.0 | 53 | 6.1 | 404 | 46.3 | 186 | 21.3 | 203 | 23.3 | 27 | 3.1 |
| 1999 | 772 | 1 | 0.1 | 34 | 4.4 | 374 | 48.4 | 147 | 19.0 | 184 | 23.8 | 32 | 4.1 |
| 2000 | 731 | 0 | 0.0 | 48 | 6.6 | 358 | 49.0 | 134 | 18.3 | 161 | 22.0 | 30 | 4.1 |
| % Change | 16 | -100 | | 129 | | -1 | | 11 | | 150 | | 44 | |

Source: Alameda County Juvenile Probation Department
 *All percentages may not add up to 100 percent due to rounding.

APIs comprised even less of the total number of juvenile *felony* offenses against persons, ranging from 3.5 percent in 1991 to 9.1 percent in 1995 (see Table 5). This contrasts with Blacks, who were arrested for over half (57 percent), and Hispanics, who accounted for 16.4 percent of all felony offenses against persons. While the trend for the Black population is a decline in arrests for felonies against persons, the number of arrests for Hispanics, APIs, and Whites has increased in the past decade.

Blacks had the highest percentage of *misdemeanor* offenses against persons arrests (49 percent), followed by Whites (22 percent), Hispanics (18.3 percent), and APIs (6.6 percent) in 2000, but Blacks were the only racial group whose number of arrests for person offenses has decreased since 1991 (see Table 5 above).

C. Drug Offenses

Table 6
Alameda County
Juvenile Drug Offenses by Racial Group
1991 – 2000

| FELONY DRUG | | | | | | | | | | | | | |
|-------------|-----------|-----------------|-----|-----|-----|-------|------|----------|------|-------|------|-------|-----|
| Year | Total No. | American Indian | | API | | Black | | Hispanic | | White | | Other | |
| | | No. | % | No. | % | No. | % | No. | % | No. | % | No. | % |
| 1991 | 916 | 0 | 0.0 | 7 | 0.8 | 827 | 90.3 | 44 | 4.8 | 31 | 3.4 | 7 | 0.8 |
| 1992 | 932 | 2 | 0.2 | 8 | 0.9 | 804 | 86.3 | 57 | 6.1 | 54 | 5.8 | 7 | 0.8 |
| 1993 | 876 | 0 | 0.0 | 15 | 1.7 | 755 | 86.2 | 53 | 6.1 | 45 | 5.1 | 8 | 0.9 |
| 1994 | 823 | 2 | 0.2 | 18 | 2.2 | 677 | 82.3 | 70 | 8.5 | 49 | 6.0 | 7 | 0.9 |
| 1995 | 703 | 1 | 0.1 | 13 | 1.8 | 555 | 78.9 | 63 | 9.0 | 68 | 9.7 | 3 | 0.4 |
| 1996 | 777 | 1 | 0.1 | 16 | 2.1 | 582 | 74.9 | 93 | 12.0 | 76 | 9.8 | 9 | 1.2 |
| 1997 | 671 | 1 | 0.1 | 18 | 2.7 | 502 | 74.8 | 67 | 10.0 | 69 | 10.3 | 14 | 2.1 |
| 1998 | 635 | 1 | 0.2 | 25 | 3.9 | 480 | 75.6 | 60 | 9.4 | 61 | 9.6 | 8 | 1.3 |
| 1999 | 739 | 1 | 0.1 | 21 | 2.8 | 569 | 77.0 | 86 | 11.6 | 50 | 6.8 | 12 | 1.6 |
| 2000 | 629 | 0 | 0.0 | 28 | 4.5 | 452 | 71.9 | 78 | 12.4 | 59 | 9.4 | 12 | 1.9 |
| % Change | -31 | | ** | | 300 | | -45 | | 77 | | 90 | | 71 |

| MISDEMEANOR DRUG | | | | | | | | | | | | | |
|------------------|-----------|-----------------|------|-----|-----|-------|------|----------|------|-------|------|-------|-----|
| Year | Total No. | American Indian | | API | | Black | | Hispanic | | White | | Other | |
| | | No. | % | No. | % | No. | % | No. | % | No. | % | No. | % |
| 1991 | 240 | 1 | 0.4 | 4 | 1.7 | 77 | 32.1 | 57 | 23.8 | 93 | 38.8 | 8 | 3.3 |
| 1992 | 230 | 0 | 0.0 | 11 | 4.8 | 86 | 37.4 | 48 | 20.9 | 80 | 34.8 | 5 | 2.2 |
| 1993 | 280 | 2 | 0.7 | 16 | 5.7 | 74 | 26.4 | 87 | 31.1 | 95 | 33.9 | 6 | 2.1 |
| 1994 | 391 | 0 | 0.0 | 19 | 4.9 | 107 | 27.4 | 113 | 28.9 | 140 | 35.8 | 12 | 3.1 |
| 1995 | 512 | 0 | 0.0 | 28 | 5.5 | 139 | 27.1 | 139 | 27.1 | 190 | 37.1 | 16 | 3.1 |
| 1996 | 682 | 3 | 0.4 | 27 | 4.0 | 119 | 17.4 | 210 | 30.8 | 298 | 43.7 | 25 | 3.7 |
| 1997 | 640 | 0 | 0.0 | 48 | 7.5 | 102 | 15.9 | 175 | 27.3 | 281 | 43.9 | 34 | 5.3 |
| 1998 | 631 | 0 | 0.0 | 51 | 8.1 | 128 | 20.3 | 156 | 24.7 | 265 | 42.0 | 31 | 4.9 |
| 1999 | 568 | 1 | 0.2 | 20 | 3.5 | 96 | 16.9 | 155 | 27.3 | 258 | 45.4 | 38 | 6.7 |
| 2000 | 457 | 0 | 0.0 | 34 | 7.4 | 91 | 19.9 | 97 | 21.2 | 212 | 46.4 | 23 | 5.0 |
| % Change | 90 | | -100 | | 750 | | 18 | | 70 | | 128 | | 188 |

Source: Alameda County Juvenile Probation Department
 *All percentages may not add up to 100 percent due to rounding.

APIs comprised an even smaller fraction (4.5 percent) of *felony* drug offenses (compared to property offenses and crimes against persons). Blacks, Hispanics, and Whites accounting for higher percentages of these total arrests. Table 6 illustrates the increase in arrests for all racial groups, except Blacks since 1991.

Similarly, APIs were arrested in smaller numbers for misdemeanor drug offenses compared to Blacks, Hispanics, and Whites. However, what is most dramatic is the increase shown for APIs – from 4 arrests in 1991 to 34 arrests in 2000, as compared to increases evidenced by other groups.

D. Probation Violations

Table 7
Alameda County
Juvenile Probation Violations by Racial Group
1991 – 2000

| PROBATION VIOLATIONS | | | | | | | | | | | | | |
|----------------------|-----------|-----------------|-----|-----|-----|-------|------|----------|------|-------|-----|-------|------|
| Year | Total No. | American Indian | | API | | Black | | Hispanic | | White | | Other | |
| | | No. | % | No. | % | No. | % | No. | % | No. | % | No. | % |
| 1991 | 2208 | 6 | 0.3 | 124 | 5.6 | 1480 | 67.0 | 253 | 11.5 | 31 | 1.4 | 314 | 14.2 |
| 1992 | 2296 | 11 | 0.5 | 141 | 6.1 | 1469 | 64.0 | 343 | 14.9 | 49 | 2.1 | 283 | 12.3 |
| 1993 | 2124 | 6 | 0.3 | 159 | 7.5 | 1378 | 64.9 | 307 | 14.5 | 19 | 0.9 | 255 | 12.0 |
| 1994 | 2292 | 10 | 0.4 | 137 | 6.0 | 1500 | 65.4 | 311 | 13.6 | 39 | 1.7 | 295 | 12.9 |
| 1995 | 2361 | 2 | 0.1 | 146 | 6.2 | 1494 | 63.3 | 375 | 15.9 | 24 | 1.0 | 320 | 13.6 |
| 1996 | 2614 | 16 | 0.6 | 167 | 6.4 | 1578 | 60.4 | 461 | 17.6 | 54 | 2.1 | 338 | 12.9 |
| 1997 | 2874 | 12 | 0.4 | 168 | 5.8 | 1688 | 58.7 | 514 | 17.9 | 66 | 2.3 | 426 | 14.8 |
| 1998 | 3022 | 5 | 0.2 | 200 | 6.6 | 1816 | 60.1 | 541 | 17.9 | 105 | 3.5 | 355 | 11.7 |
| 1999 | 2871 | 11 | 0.4 | 149 | 5.2 | 1719 | 59.9 | 476 | 16.6 | 180 | 6.3 | 336 | 11.7 |
| 2000 | 2922 | 2 | 0.1 | 173 | 5.9 | 1709 | 58.5 | 503 | 17.2 | 105 | 3.6 | 430 | 14.7 |
| % Change | 32 | -67 | | 40 | | 15 | | 99 | | 239 | | 37 | |

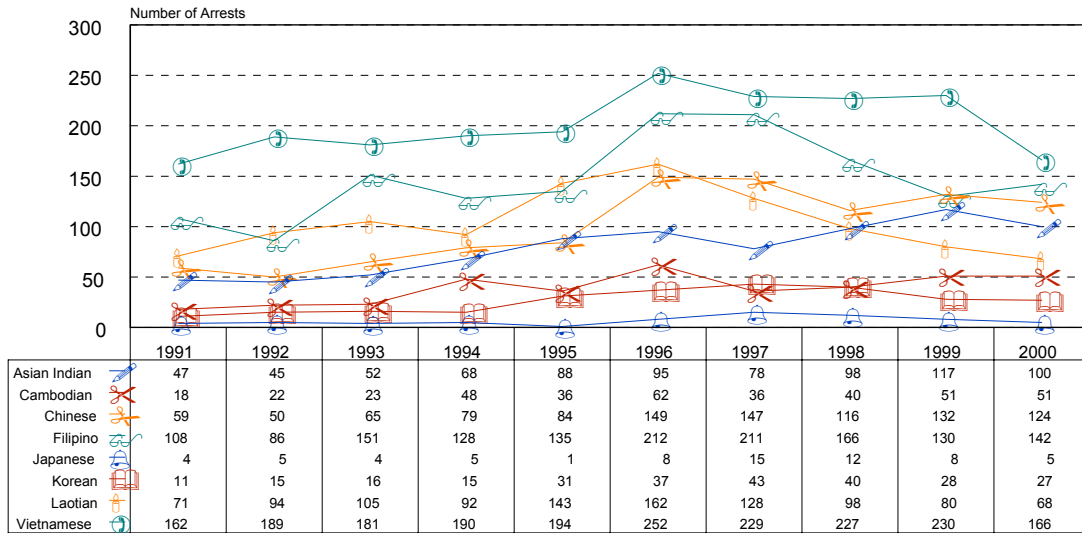
Source: Alameda County Juvenile Probation Department
 *All percentages may not add up to 100 percent due to rounding.

In 2000, Blacks had the highest percentage of probation violation referrals (58.5 percent), followed by Hispanics (17.2 percent), Others (14.7 percent), APIs (5.9 percent), and Whites (3.6 percent) (see Table 7). While the number of arrests for probation violations has increased for every race except American Indian, the most dramatic increase has been for Whites (239 percent), followed by Hispanics (99 percent) and APIs (40 percent).

V. Trends in Juvenile Arrests by API Ethnic Group

This section reviews juvenile arrest trends for the 11 major represented API ethnic groups in Alameda County from 1991-2000.

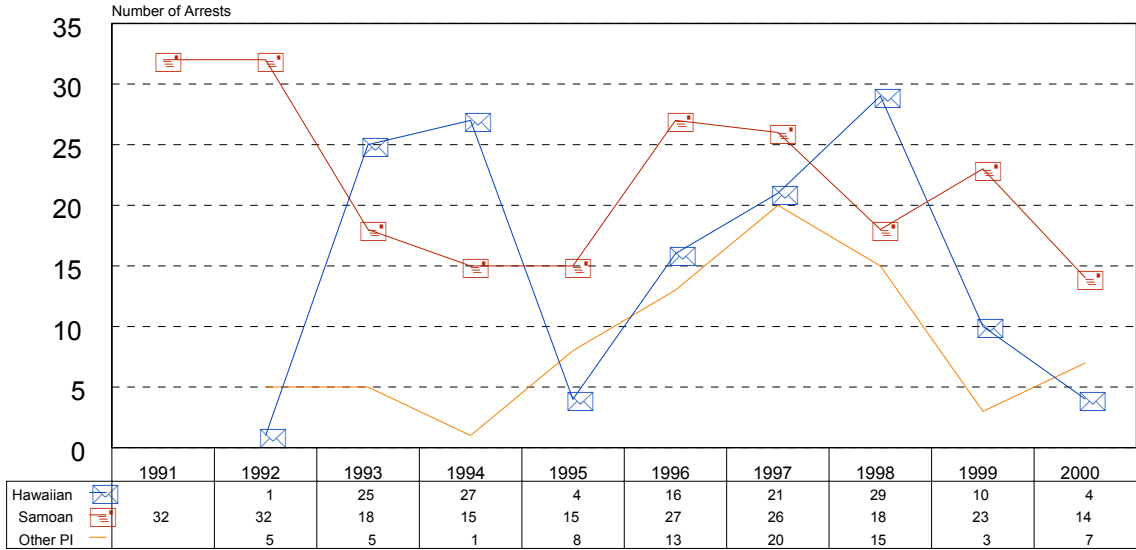
Figure 4A
Alameda County
Juvenile Arrests by Asian Ethnic Group
1991 - 2000



Source: Alameda County Juvenile Probation Department

As mentioned earlier, API juvenile arrests are up 44.1 percent from 1991. This was mainly the result of increases in Cambodian (183.3 percent), Korean (145.5 percent), Asian Indian (112.8 percent), Chinese (110.2 percent), Filipino (31.5 percent), and Vietnamese (2.5 percent) arrests (see Figures 4A and 4B). The increase in Vietnamese arrests is most significant because they were responsible for between 21.2 percent (2000) and 32.5 percent (1992) of the total API juvenile arrests per year during the decade. Filipinos were responsible for between 14.8 percent (1992) and 20.2 percent (1997) of total API juvenile arrests per year, with a decade high of 212 arrests in 1996. Chinese accounted for between 8.6 percent (1992) and 15.8 percent (2000) of total API juvenile arrests per year with a decade high of 149 arrests in 1996. Asian Indians comprised between 7.7 percent (1992) and 13.5 percent (1999) of total API juvenile arrests per year, with a decade high of 117 arrests in 1999. Laotians accounted for between 8.7 percent (2000) and 17.4 percent (1995) with a decade high of 162 arrests in 1996. All other API ethnic groups each accounted for less than 10 percent of total API juvenile arrests.

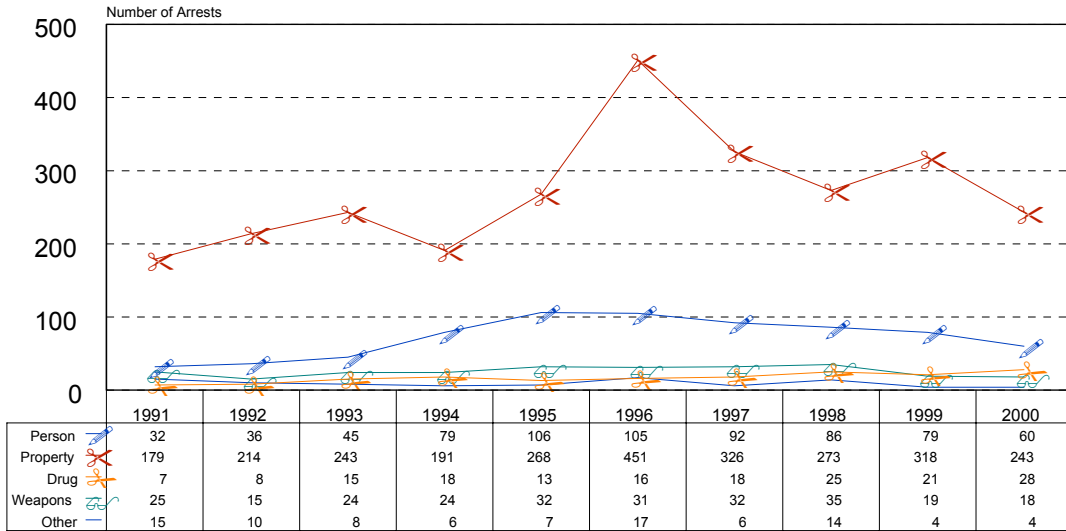
**Figure 4B
Alameda County
Pacific Islander Juvenile Arrests
1991 - 2000**



Source: Alameda County Juvenile Probation Department

In 2000, the majority of API juvenile felony arrests were made for property offenses (68.8 percent), followed by person (17 percent), and drug (7.9 percent) offenses (see Figure 5). Compared to 1991 figures, this represents an increase of 35.8 percent in property offenses, 87.5 percent in person offenses, and 300 percent in drug offenses.

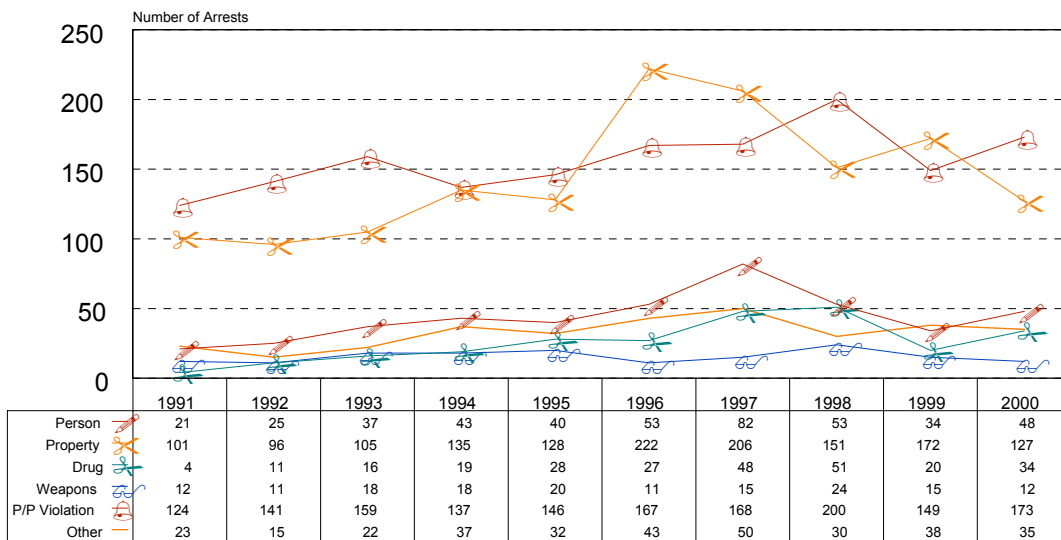
Figure 5
Alameda County
Asian/Pacific Islander Juvenile Felony Arrests by Offense Type
1991 - 2000



Source: Alameda County Juvenile Probation Department

In 2000, the majority of API juvenile misdemeanor/probation violation arrests were for probation violations (40.3 percent), followed by property (29.6 percent) and person (11.2 percent) offenses (see Figure 6). In all categories, there was a marked increase from the 1991 statistics. For instance, person offenses went up 128.6 percent and probation violations increased 39.5 percent. Vietnamese (29.5 percent), Filipino (17.3 percent), Asian Indian (12.1 percent), and Chinese (10.4 percent) juveniles were mainly responsible for API juvenile misdemeanor probation violation arrests in 2000, with all ethnicities mentioned experiencing an upward trend from 1991.

Figure 6
Alameda County
Asian/Pacific Islander Juvenile Misdemeanor and Probation Violation Arrests
by Offense Type
1991 - 2000



Source: Alameda County Juvenile Probation Department

A. Property Offenses

Table 8
Alameda County
Juvenile Property Offenses by API Ethnic Group
1991 – 2000

| FELONY PROPERTY | | | | | | | | | | | | | | | | | | | | | | | | | |
|-----------------|-------|--------------|------|-----------|-----|---------|------|----------|------|----------|-----|----------|-----|--------|---------|-------------|--------|------------|-----------|-----|-----|-----|------|-----|------|
| Year | Total | Asian Indian | | Cambodian | | Chinese | | Filipino | | Hawaiian | | Japanese | | Korean | Laotian | Pacific Is. | Samoan | Vietnamese | Other API | | | | | | |
| | No. | No. | %* | No. | %* | No. | %* | No. | %* | No. | %* | No. | %* | No. | %* | No. | %* | No. | %* | | | | | | |
| 1991 | 179 | 13 | 7.3 | 11 | 6.1 | 12 | 6.7 | 32 | 17.9 | 0 | 0.0 | 0 | 0.0 | 3 | 1.7 | 21 | 11.7 | 0 | 0.0 | # | 6.7 | 63 | 35.2 | 12 | 6.7 |
| 1992 | 214 | 13 | 6.1 | 9 | 4.2 | 22 | 10.3 | 26 | 12.1 | 1 | 0.5 | 0 | 0.0 | 6 | 2.8 | 39 | 18.2 | 1 | 0.5 | 9 | 4.2 | 77 | 36.0 | 11 | 5.1 |
| 1993 | 243 | 26 | 10.7 | 3 | 1.2 | 24 | 9.9 | 33 | 13.6 | 6 | 2.5 | 3 | 1.2 | 5 | 2.1 | 39 | 16.0 | 0 | 0.0 | 2 | 0.8 | 87 | 35.8 | 15 | 6.2 |
| 1994 | 191 | 10 | 5.2 | 11 | 5.8 | 21 | 11.0 | 26 | 13.6 | 8 | 4.2 | 0 | 0.0 | 7 | 3.7 | 32 | 16.8 | 0 | 0.0 | 1 | 0.5 | 66 | 34.6 | 9 | 4.7 |
| 1995 | 268 | 22 | 8.2 | 12 | 4.5 | 31 | 11.6 | 29 | 10.8 | 1 | 0.4 | 1 | 0.4 | 15 | 5.6 | 52 | 19.4 | 0 | 0.0 | 1 | 0.4 | 75 | 28.0 | 29 | 10.8 |
| 1996 | 451 | 29 | 6.4 | 28 | 6.2 | 56 | 12.4 | 63 | 14.0 | 9 | 2.0 | 2 | 0.4 | 18 | 4.0 | 84 | 18.6 | 3 | 0.7 | 8 | 1.8 | 110 | 24.4 | 41 | 9.1 |
| 1997 | 326 | 22 | 6.7 | 8 | 2.5 | 48 | 14.7 | 53 | 16.3 | 3 | 0.9 | 3 | 0.9 | 14 | 4.3 | 50 | 15.3 | 3 | 0.9 | 3 | 0.9 | 91 | 27.9 | 28 | 8.6 |
| 1998 | 273 | 23 | 8.4 | 17 | 6.2 | 41 | 15.0 | 41 | 15.0 | 1 | 0.4 | 0 | 0.0 | 13 | 4.8 | 33 | 12.1 | 2 | 0.7 | 3 | 1.1 | 83 | 30.4 | 16 | 5.9 |
| 1999 | 318 | 34 | 10.7 | 26 | 8.2 | 51 | 16.0 | 32 | 10.1 | 3 | 0.9 | 4 | 1.3 | 10 | 3.1 | 36 | 11.3 | 0 | 0.0 | 7 | 2.2 | 94 | 29.6 | 21 | 6.6 |
| 2000 | 243 | 22 | 9.1 | 20 | 8.2 | 37 | 15.2 | 37 | 15.2 | 1 | 0.4 | 1 | 0.4 | 9 | 3.7 | 30 | 12.3 | 2 | 0.8 | 1 | 0.4 | 58 | 23.9 | 25 | 10.3 |
| %*Change | 36 | | 69 | | 82 | | 208 | | 16 | | ** | ** | | 200 | | 43 | | ** | | -92 | | -8 | | 108 | |

| MISDEMEANOR PROPERTY | | | | | | | | | | | | | | | | | | | | | | | | | |
|----------------------|-------|--------------|------|-----------|-----|---------|------|----------|------|----------|-----|----------|-----|--------|---------|-------------|--------|------------|-----------|---|-----|-----|------|-----|------|
| Year | Total | Asian Indian | | Cambodian | | Chinese | | Filipino | | Hawaiian | | Japanese | | Korean | Laotian | Pacific Is. | Samoan | Vietnamese | Other API | | | | | | |
| | No. | No. | %* | No. | %* | No. | %* | No. | %* | No. | %* | No. | %* | No. | %* | No. | %* | No. | %* | | | | | | |
| 1991 | 101 | 5 | 5.0 | 4 | 4.0 | 10 | 9.9 | 26 | 25.7 | 0 | 0.0 | 0 | 0.0 | 3 | 3.0 | 18 | 17.8 | 0 | 0.0 | 2 | 2.0 | 30 | 29.7 | 3 | 3.0 |
| 1992 | 96 | 6 | 6.3 | 1 | 1.0 | 7 | 7.3 | 16 | 16.7 | 0 | 0.0 | 0 | 0.0 | 4 | 4.2 | 17 | 17.7 | 1 | 1.0 | 2 | 2.1 | 38 | 39.6 | 4 | 4.2 |
| 1993 | 105 | 4 | 3.8 | 3 | 2.9 | 14 | 13.3 | 40 | 38.1 | 1 | 1.0 | 0 | 0.0 | 1 | 1.0 | 13 | 12.4 | 1 | 1.0 | 1 | 1.0 | 17 | 16.2 | 10 | 9.5 |
| 1994 | 135 | 4 | 3.0 | 5 | 3.7 | 18 | 13.3 | 27 | 20.0 | 2 | 1.5 | 2 | 1.5 | 2 | 1.5 | 16 | 11.9 | 1 | 0.7 | 1 | 0.7 | 48 | 35.6 | 9 | 6.7 |
| 1995 | 128 | 17 | 13.3 | 3 | 2.3 | 17 | 13.3 | 30 | 23.4 | 2 | 1.6 | 0 | 0.0 | 5 | 3.9 | 14 | 10.9 | 0 | 0.0 | 0 | 0.0 | 30 | 23.4 | 10 | 7.8 |
| 1996 | 222 | 22 | 9.9 | 6 | 2.7 | 39 | 17.6 | 52 | 23.4 | 2 | 0.9 | 1 | 0.5 | 5 | 2.3 | 24 | 10.8 | 3 | 1.4 | 1 | 0.5 | 39 | 17.6 | 28 | 12.6 |
| 1997 | 206 | 25 | 12.1 | 5 | 2.4 | 36 | 17.5 | 45 | 21.8 | 2 | 1.0 | 1 | 0.5 | 9 | 4.4 | 20 | 9.7 | 8 | 3.9 | 2 | 1.0 | 36 | 17.5 | 17 | 8.3 |
| 1998 | 151 | 17 | 11.3 | 2 | 1.3 | 29 | 19.2 | 31 | 20.5 | 4 | 2.6 | 2 | 1.3 | 5 | 3.3 | 10 | 6.6 | 0 | 0.0 | 3 | 2.0 | 21 | 13.9 | 27 | 17.9 |
| 1999 | 172 | 32 | 18.6 | 4 | 2.3 | 28 | 16.3 | 40 | 23.3 | 0 | 0.0 | 3 | 1.7 | 6 | 3.5 | 4 | 2.3 | 2 | 1.2 | 1 | 0.6 | 36 | 20.9 | 16 | 9.3 |
| 2000 | 127 | 19 | 15.0 | 4 | 3.1 | 24 | 18.9 | 34 | 26.8 | 0 | 0.0 | 0 | 0.0 | 5 | 3.9 | 5 | 3.9 | 0 | 0.0 | 2 | 1.6 | 20 | 15.7 | 14 | 11.0 |
| %*Change | 26 | | 280 | | 0 | | 140 | | 31 | | ** | ** | | 67 | | -72 | | ** | | 0 | | -33 | | 367 | |

Source: Alameda County Juvenile Probation Department
 *All percentages may not add up to 100 percent due to rounding.
 **Indivisible by zero, number is undefined.

Overall, from 1991 to 2000, both felony (36 percent) and misdemeanor (26 percent) property arrests increased for API juveniles. Vietnamese (23.9 percent), Chinese (15.2 percent), Filipino (15.2 percent), and Laotians (12.3 percent) were the main groups arrested for felony property crimes in 2000 (see Table 8).

Filipinos had the highest number of API juvenile misdemeanor property arrests (26.8 percent) followed by Chinese juveniles at 18.9 percent (see Table 8). All groups except Laotian and Vietnamese juveniles experienced an upward trend.

B. Crimes Against Persons

Table 9
Alameda County
Juvenile Offenses Against Persons by API Ethnic Group
1991 – 2000

| FELONY AGAINST PERSONS | | | | | | | | | | | | | | | | | | | | | | | | | |
|------------------------|-------|--------------|------|-----------|-----|---------|------|----------|------|----------|-----|----------|-----|--------|-----|---------|------|-------------|-----|--------|-----|------------|------|-----------|-----|
| Year | Total | Asian Indian | | Cambodian | | Chinese | | Filipino | | Hawaiian | | Japanese | | Korean | | Laotian | | Pacific Is. | | Samoan | | Vietnamese | | Other API | |
| | No. | No. | %* | No. | %* | No. | %* | No. | %* | No. | %* | No. | %* | No. | %* | No. | %* | No. | %* | No. | %* | No. | %* | No. | %* |
| 1991 | 32 | 3 | 9.4 | 1 | 3.1 | 6 | 18.8 | 9 | 28.1 | 0 | 0.0 | 0 | 0.0 | 1 | 3.1 | 3 | 9.4 | 0 | 0.0 | 2 | 6.3 | 6 | 18.8 | 1 | 3.1 |
| 1992 | 36 | 6 | 16.7 | 1 | 2.8 | 3 | 8.3 | 8 | 22.2 | 0 | 0.0 | 0 | 0.0 | 0 | 0.0 | 4 | 11.1 | 0 | 0.0 | 2 | 5.6 | 9 | 25.0 | 3 | 8.3 |
| 1993 | 45 | 4 | 8.9 | 2 | 4.4 | 4 | 8.9 | 13 | 28.9 | 4 | 8.9 | 0 | 0.0 | 1 | 2.2 | 8 | 17.8 | 0 | 0.0 | 1 | 2.2 | 7 | 15.6 | 1 | 2.2 |
| 1994 | 79 | 8 | 10.1 | 4 | 5.1 | 10 | 12.7 | 13 | 16.5 | 3 | 3.8 | 0 | 0.0 | 1 | 1.3 | 12 | 15.2 | 0 | 0.0 | 6 | 7.6 | 16 | 20.3 | 6 | 7.6 |
| 1995 | 106 | 10 | 9.4 | 5 | 4.7 | 17 | 16.0 | 13 | 12.3 | 0 | 0.0 | 0 | 0.0 | 1 | 0.9 | 13 | 12.3 | 3 | 2.8 | 5 | 4.7 | 29 | 27.4 | 10 | 9.4 |
| 1996 | 105 | 10 | 9.5 | 4 | 3.8 | 20 | 19.0 | 22 | 21.0 | 0 | 0.0 | 1 | 1.0 | 3 | 2.9 | 7 | 6.7 | 3 | 2.9 | 6 | 5.7 | 22 | 21.0 | 7 | 6.7 |
| 1997 | 92 | 9 | 9.8 | 7 | 7.6 | 12 | 13.0 | 14 | 15.2 | 2 | 2.2 | 3 | 3.3 | 5 | 5.4 | 16 | 17.4 | 2 | 2.2 | 1 | 1.1 | 17 | 18.5 | 4 | 4.3 |
| 1998 | 86 | 14 | 16.3 | 3 | 3.5 | 9 | 10.5 | 21 | 24.4 | 0 | 0.0 | 1 | 1.2 | 6 | 7.0 | 5 | 5.8 | 3 | 3.5 | 5 | 5.8 | 15 | 17.4 | 4 | 4.7 |
| 1999 | 79 | 5 | 6.3 | 5 | 6.3 | 15 | 19.0 | 15 | 19.0 | 0 | 0.0 | 0 | 0.0 | 5 | 6.3 | 5 | 6.3 | 0 | 0.0 | 5 | 6.3 | 19 | 24.1 | 5 | 6.3 |
| 2000 | 60 | 7 | 11.7 | 4 | 6.7 | 13 | 21.7 | 12 | 20.0 | 1 | 1.7 | 1 | 1.7 | 1 | 1.7 | 4 | 6.7 | 0 | 0.0 | 3 | 5.0 | 9 | 15.0 | 5 | 8.3 |
| %*Change | 88 | 133 | | 300 | | 117 | | 33 | | ** | | ** | | 0 | | 33 | | ** | | 50 | | 50 | | 400 | |

| MISDEMEANOR AGAINST PERSONS | | | | | | | | | | | | | | | | | | | | | | | | | |
|-----------------------------|-------|--------------|------|-----------|-----|---------|------|----------|------|----------|-----|----------|-----|--------|-----|---------|------|-------------|-----|--------|-----|------------|------|-----------|------|
| Year | Total | Asian Indian | | Cambodian | | Chinese | | Filipino | | Hawaiian | | Japanese | | Korean | | Laotian | | Pacific Is. | | Samoan | | Vietnamese | | Other API | |
| | No. | No. | %* | No. | %* | No. | %* | No. | %* | No. | %* | No. | %* | No. | %* | No. | %* | No. | %* | No. | %* | No. | %* | No. | %* |
| 1991 | 21 | 4 | 19.0 | 0 | 0.0 | 2 | 9.5 | 7 | 33.3 | 0 | 0.0 | 0 | 0.0 | 0 | 0.0 | 1 | 4.8 | 0 | 0.0 | 0 | 0.0 | 5 | 23.8 | 2 | 9.5 |
| 1992 | 25 | 1 | 4.0 | 0 | 0.0 | 2 | 8.0 | 4 | 16.0 | 0 | 0.0 | 0 | 0.0 | 0 | 0.0 | 2 | 8.0 | 1 | 4.0 | 2 | 8.0 | 11 | 44.0 | 2 | 8.0 |
| 1993 | 37 | 5 | 13.5 | 0 | 0.0 | 4 | 10.8 | 9 | 24.3 | 2 | 5.4 | 0 | 0.0 | 0 | 0.0 | 4 | 10.8 | 1 | 2.7 | 3 | 8.1 | 7 | 18.9 | 2 | 5.4 |
| 1994 | 43 | 7 | 16.3 | 2 | 4.7 | 6 | 14.0 | 13 | 30.2 | 2 | 4.7 | 1 | 2.3 | 1 | 2.3 | 1 | 2.3 | 0 | 0.0 | 0 | 0.0 | 7 | 16.3 | 3 | 7.0 |
| 1995 | 40 | 2 | 5.0 | 1 | 2.5 | 3 | 7.5 | 13 | 32.5 | 0 | 0.0 | 0 | 0.0 | 0 | 0.0 | 8 | 20.0 | 1 | 2.5 | 1 | 2.5 | 5 | 12.5 | 6 | 15.0 |
| 1996 | 53 | 12 | 22.6 | 5 | 9.4 | 3 | 5.7 | 10 | 18.9 | 0 | 0.0 | 1 | 1.9 | 3 | 5.7 | 6 | 11.3 | 0 | 0.0 | 1 | 1.9 | 8 | 15.1 | 4 | 7.5 |
| 1997 | 82 | 10 | 12.2 | 2 | 2.4 | 11 | 13.4 | 18 | 22.0 | 1 | 1.2 | 3 | 3.7 | 7 | 8.5 | 5 | 6.1 | 3 | 3.7 | 0 | 0.0 | 15 | 18.3 | 7 | 8.5 |
| 1998 | 53 | 11 | 20.8 | 1 | 1.9 | 5 | 9.4 | 8 | 15.1 | 1 | 1.9 | 1 | 1.9 | 1 | 1.9 | 6 | 11.3 | 3 | 5.7 | 4 | 7.5 | 3 | 5.7 | 9 | 17.0 |
| 1999 | 34 | 10 | 29.4 | 0 | 0.0 | 7 | 20.6 | 4 | 11.8 | 1 | 2.9 | 1 | 2.9 | 1 | 2.9 | 0 | 0.0 | 1 | 2.9 | 1 | 2.9 | 6 | 17.6 | 2 | 5.9 |
| 2000 | 48 | 7 | 14.6 | 3 | 6.3 | 11 | 22.9 | 9 | 18.8 | 0 | 0.0 | 1 | 2.1 | 4 | 8.3 | 2 | 4.2 | 0 | 0.0 | 1 | 2.1 | 6 | 12.5 | 4 | 8.3 |
| %*Change | 129 | 75 | | ** | | 450 | | 29 | | ** | | ** | | ** | | 100 | | ** | | ** | | 20 | | 100 | |

Source: Alameda County Juvenile Probation Department
 *All percentages may not add up to 100 percent due to rounding.
 **Indivisible by zero, number is undefined.

From 1991 to 2000, the number of APIs arrested for felony crimes against persons almost doubled (+88 percent) with all groups showing increased arrests. Juveniles committing the most juvenile felony offenses against persons were Chinese (21.7 percent), followed by Filipinos (20 percent), and Asian Indian (11.7 percent) (see Table 9).

By the year 2000, API arrests for misdemeanor offenses against persons had increased 129 percent from 1991 numbers (see Table 9). When looking at the earlier part of the decade we see that Vietnamese, Filipinos, and Asian Indians committed the majority of misdemeanor crimes against persons. By 2000, Chinese had the highest number of misdemeanor against persons (22.9 percent).

C. Drug Offenses

Chinese, Filipino, Laotian, and Vietnamese juveniles mainly accounted for API juvenile felony drug arrests, although the overall numbers are very small (see Table 10).

Table 10
Alameda County
Juvenile Drug Offenses by API Ethnic Group
1991 – 2000

| FELONY DRUG | | | | | | | | | | | | | | | | | | | | | | | | | |
|-------------|-------|--------------|------|-----------|------|---------|------|----------|------|----------|-----|----------|------|--------|-----|---------|------|-------------|-----|--------|------|------------|------|-----------|------|
| Year | Total | Asian Indian | | Cambodian | | Chinese | | Filipino | | Hawaiian | | Japanese | | Korean | | Laotian | | Pacific Is. | | Samoan | | Vietnamese | | Other API | |
| | No. | No. | %* | No. | %* | No. | %* | No. | %* | No. | %* | No. | %* | No. | %* | No. | %* | No. | %* | No. | %* | No. | %* | No. | %* |
| 1991 | 7 | 1 | 14.3 | 0 | 0.0 | 1 | 14.3 | 1 | 14.3 | 0 | 0.0 | 0 | 0.0 | 0 | 0.0 | 1 | 14.3 | 0 | 0.0 | 1 | 14.3 | 1 | 14.3 | 1 | 14.3 |
| 1992 | 8 | 0 | 0.0 | 2 | 25.0 | 3 | 37.5 | 2 | 25.0 | 0 | 0.0 | 1 | 12.5 | 0 | 0.0 | 0 | 0.0 | 0 | 0.0 | 0 | 0.0 | 0 | 0.0 | 0 | 0.0 |
| 1993 | 15 | 1 | 6.7 | 0 | 0.0 | 2 | 13.3 | 4 | 26.7 | 1 | 6.7 | 0 | 0.0 | 0 | 0.0 | 1 | 6.7 | 0 | 0.0 | 1 | 6.7 | 5 | 33.3 | 0 | 0.0 |
| 1994 | 18 | 3 | 16.7 | 2 | 11.1 | 1 | 5.6 | 4 | 22.2 | 1 | 5.6 | 0 | 0.0 | 1 | 5.6 | 4 | 22.2 | 0 | 0.0 | 0 | 0.0 | 1 | 5.6 | 1 | 5.6 |
| 1995 | 13 | 2 | 15.4 | 1 | 7.7 | 0 | 0.0 | 1 | 7.7 | 0 | 0.0 | 0 | 0.0 | 0 | 0.0 | 5 | 38.5 | 1 | 7.7 | 0 | 0.0 | 1 | 7.7 | 2 | 15.4 |
| 1996 | 16 | 3 | 18.8 | 1 | 6.3 | 1 | 6.3 | 4 | 25.0 | 0 | 0.0 | 0 | 0.0 | 0 | 0.0 | 1 | 6.3 | 1 | 6.3 | 1 | 6.3 | 2 | 12.5 | 2 | 12.5 |
| 1997 | 18 | 2 | 11.1 | 1 | 5.6 | 3 | 16.7 | 4 | 22.2 | 0 | 0.0 | 1 | 5.6 | 0 | 0.0 | 0 | 0.0 | 0 | 0.0 | 1 | 5.6 | 4 | 22.2 | 2 | 11.1 |
| 1998 | 25 | 2 | 8.0 | 0 | 0.0 | 0 | 0.0 | 6 | 24.0 | 0 | 0.0 | 2 | 8.0 | 2 | 8.0 | 8 | 32.0 | 0 | 0.0 | 0 | 0.0 | 3 | 12.0 | 2 | 8.0 |
| 1999 | 21 | 4 | 19.0 | 2 | 9.5 | 5 | 23.8 | 2 | 9.5 | 0 | 0.0 | 0 | 0.0 | 0 | 0.0 | 4 | 19.0 | 0 | 0.0 | 0 | 0.0 | 3 | 14.3 | 1 | 4.8 |
| 2000 | 28 | 2 | 7.1 | 2 | 7.1 | 5 | 17.9 | 3 | 10.7 | 0 | 0.0 | 0 | 0.0 | 0 | 0.0 | 8 | 28.6 | 1 | 3.6 | 0 | 0.0 | 5 | 17.9 | 2 | 7.1 |
| %*Change | 300 | | 100 | | ** | | 400 | | 200 | | ** | | ** | | ** | | 700 | | ** | | -100 | | 400 | | 100 |

| MISDEMEANOR DRUG | | | | | | | | | | | | | | | | | | | | | | | | | |
|------------------|-------|--------------|------|-----------|-----|---------|------|----------|------|----------|------|----------|-----|--------|------|---------|------|-------------|-----|--------|-----|------------|------|-----------|------|
| Year | Total | Asian Indian | | Cambodian | | Chinese | | Filipino | | Hawaiian | | Japanese | | Korean | | Laotian | | Pacific Is. | | Samoan | | Vietnamese | | Other API | |
| | No. | No. | %* | No. | %* | No. | %* | No. | %* | No. | %* | No. | %* | No. | %* | No. | %* | No. | %* | No. | %* | No. | %* | No. | %* |
| 1991 | 4 | 0 | 0.0 | 0 | 0.0 | 2 | 50.0 | 0 | 0.0 | 0 | 0.0 | 0 | 0.0 | 0 | 0.0 | 0 | 0.0 | 0 | 0.0 | 0 | 0.0 | 0 | 0.0 | 2 | 50.0 |
| 1992 | 11 | 3 | 27.3 | 0 | 0.0 | 0 | 0.0 | 4 | 36.4 | 0 | 0.0 | 1 | 9.1 | 0 | 0.0 | 0 | 0.0 | 0 | 0.0 | 1 | 9.1 | 2 | 18.2 | 0 | 0.0 |
| 1993 | 16 | 1 | 6.3 | 1 | 6.3 | 0 | 0.0 | 3 | 18.8 | 1 | 6.3 | 0 | 0.0 | 1 | 6.3 | 0 | 0.0 | 0 | 0.0 | 0 | 0.0 | 2 | 12.5 | 7 | 43.8 |
| 1994 | 19 | 5 | 26.3 | 1 | 5.3 | 1 | 5.3 | 4 | 21.1 | 1 | 5.3 | 1 | 5.3 | 0 | 0.0 | 1 | 5.3 | 0 | 0.0 | 1 | 5.3 | 3 | 15.8 | 1 | 5.3 |
| 1995 | 28 | 9 | 32.1 | 0 | 0.0 | 1 | 3.6 | 6 | 21.4 | 0 | 0.0 | 0 | 0.0 | 0 | 0.0 | 4 | 14.3 | 0 | 0.0 | 1 | 3.6 | 3 | 10.7 | 4 | 14.3 |
| 1996 | 27 | 3 | 11.1 | 0 | 0.0 | 2 | 7.4 | 9 | 33.3 | 1 | 3.7 | 0 | 0.0 | 4 | 14.8 | 1 | 3.7 | 0 | 0.0 | 1 | 3.7 | 0 | 0.0 | 6 | 22.2 |
| 1997 | 48 | 0 | 0.0 | 0 | 0.0 | 5 | 10.4 | 15 | 31.3 | 4 | 8.3 | 1 | 2.1 | 2 | 4.2 | 2 | 4.2 | 2 | 4.2 | 0 | 0.0 | 5 | 10.4 | 12 | 25.0 |
| 1998 | 51 | 3 | 5.9 | 1 | 2.0 | 2 | 3.9 | 7 | 13.7 | 6 | 11.8 | 3 | 5.9 | 4 | 7.8 | 6 | 11.8 | 2 | 3.9 | 1 | 2.0 | 11 | 21.6 | 5 | 9.8 |
| 1999 | 20 | 4 | 20.0 | 0 | 0.0 | 3 | 15.0 | 3 | 15.0 | 1 | 5.0 | 0 | 0.0 | 1 | 5.0 | 1 | 5.0 | 0 | 0.0 | 0 | 0.0 | 4 | 20.0 | 3 | 15.0 |
| 2000 | 34 | 4 | 11.8 | 0 | 0.0 | 5 | 14.7 | 7 | 20.6 | 0 | 0.0 | 2 | 5.9 | 1 | 2.9 | 1 | 2.9 | 1 | 2.9 | 0 | 0.0 | 4 | 11.8 | 9 | 26.5 |
| %*Change | 750 | | ** | | ** | | 150 | | ** | | ** | | ** | | ** | | ** | | ** | | ** | | ** | | 350 |

Source: Alameda County Juvenile Probation Department

*All percentages may not add up to 100 percent due to rounding.

**Indivisible by zero, number is undefined.

VI. Ethnic Representation of Arrest Rates

Alameda County's total juvenile arrest rate declined from 75.4 arrests per thousand juveniles in 1991 to 58.2 arrests per thousand juveniles in 2000 (refer back to Table 3).

This was the result of decreases in Black, Hispanic, and Asian arrest rates; however, the decline in Black arrest rates is most significant because Blacks have higher arrest rates than Hispanics, Asians, and Whites. Asian arrest rates decreased from 26.6 arrests per thousand individuals in 1991 to 23.1 arrests per thousand individuals in 2000.

When all API groups were combined in the Asian category, Asians appear to have one of the lowest arrest rates. However, when data for API groups are disaggregated, ethnic differences in arrest rates emerge showing some Asian populations to have even higher arrest rates as compared to their racial counterparts. In particular, Samoans have the highest arrest rate (See Table 11B) and Laotians and Vietnamese third and fourth highest, respectively (Table 11A and Table 11B).

Table 11A
Alameda County
Juvenile Arrest Rate (Number of Arrests) by Racial and Ethnic Group, 1991

| Ethnicity | Total # of Arrests in 1991 | Youths 10 to 17 Population | Rate per 1,000 |
|-----------------|----------------------------|----------------------------|----------------|
| American Indian | 22 | 978 | 22.4 |
| Asian Indian | 47 | 1,654 | 28.4 |
| Black | 5,592 | 27,131 | 206.1 |
| Cambodian | 18 | 561 | 32.1 |
| Chinese | 59 | 6,781 | 8.7 |
| Filipino | 108 | 6,301 | 17.1 |
| Hawaiian | 0 | 311 | 0.0 |
| Hispanic | 1,299 | 22,483 | 57.8 |
| Japanese | 4 | 721 | 5.5 |
| Korean | 11 | 903 | 12.2 |
| Laotian | 71 | 488 | 145.5 |
| Samoan | 32 | 169 | 189.3 |
| Vietnamese | 162 | 2,219 | 73.0 |
| White | 1,502 | 50,647 | 29.7 |

Source: Alameda County Juvenile Probation Department; US Census, 1990

Table 11B
Alameda County
Juvenile Arrest Rate (Number of Unique Youths) by Racial and Ethnic Group
1991

| Ethnicity | Total # of Unique Youth Arrested in 1991 | Youths 10 to 17 Population | Rate per 1,000 |
|-----------------|---|----------------------------------|-------------------|
| American Indian | 10 | 978 | 10.2 |
| Asian Indian | 21 | 1,654 | 12.7 |
| Black | 2,638 | 27,131 | 97.2 |
| Cambodian | 14 | 561 | 25.0 |
| Chinese | 42 | 6,781 | 6.2 |
| Filipino | 73 | 6,301 | 11.6 |
| Hawaiian | 0 | 311 | 0.0 |
| Hispanic | 736 | 22,483 | 32.7 |
| Japanese | 2 | 721 | 2.8 |
| Korean | 9 | 903 | 10.0 |
| Laotian | 36 | 488 | 73.8 |
| Samoan | 19 | 169 | 112.4 |
| Vietnamese | 93 | 2,219 | 41.9 |
| White | 892 | 50,647 | 17.6 |

Source: Alameda County Juvenile Probation Department; US Census, 1990

VII. Ethnic Representation in Arrests, Adjudications, and Institutional Placements

Table 12 shows juvenile arrest, adjudication, and institutional placement data in Alameda County for 2000. The rows show percentage for each major ethnic group for youth 10-17 years of age, total juvenile arrests, adjudications, and institutional placements (such as California Youth Authority (CYA)). For example, the table shows that API youths comprised 21 percent of the population 10-17 years of age; 8 percent of arrests of juveniles; 10 percent of adjudications; and 12 percent of institutional placements. Within the API group (note that population data reflects 1990), Vietnamese youths are most likely to be arrested, adjudicated, and receive an institutional placement.

Table 12
Alameda County
Juveniles by Population, Arrests, Adjudications, and Placements
2000

| Ethnicity | Juvenile Population* | | Arrests | | Adjudications | | Institutional Placements | |
|-----------------|----------------------|-----|---------|-----|---------------|-----|--------------------------|-----|
| | Number | % | Number | % | Number | % | Number | % |
| American Indian | 693 | 0.4 | 5 | 0 | 0 | 0 | 0 | 0 |
| API | 33,975 | 21 | 784 | 8 | 225 | 10 | 28 | 12 |
| Black | 31,989 | 20 | 4,751 | 51 | 1,420 | 61 | 149 | 65 |
| Hispanic | 34,664 | 21 | 1,672 | 18 | 351 | 15 | 37 | 16 |
| White | 60,357 | 37 | 1,863 | 20 | 333 | 14 | 16 | 7 |
| Other | - | - | 328 | 3 | 0 | 0 | 0 | 0 |
| Total | 161,678 | 100 | 9,403 | 100 | 2,329 | 100 | 230 | 100 |

| API Ethnic Groups | Juvenile Population** | | Arrests | | Adjudications | | Institutional Placements | |
|-------------------|-----------------------|-----|---------|-----|---------------|-----|--------------------------|-----|
| | Number | % | Number | % | Number | % | Number | % |
| Asian Indian | 1654 | 8 | 100 | 13 | 11 | 5 | 1 | 4 |
| Cambodian | 561 | 3 | 51 | 7 | 16 | 7 | 0 | 0 |
| Chinese | 6781 | 33 | 124 | 16 | 43 | 19 | 3 | 1 |
| Filipino | 6301 | 31 | 142 | 18 | 38 | 17 | 3 | 11 |
| Hawaiian | 311 | 2 | 4 | 1 | 3 | 1 | 1 | 4 |
| Japanese | 721 | 4 | 5 | 1 | 0 | 0 | 0 | 0 |
| Korean | 903 | 5 | 27 | 3 | 1 | 0 | 0 | 0 |
| Laotian | 488 | 2 | 68 | 9 | 25 | 11 | 5 | 18 |
| Samoan | 169 | 1 | 14 | 2 | 6 | 3 | 0 | 0 |
| Vietnamese | 2219 | 11 | 166 | 21 | 57 | 25 | 12 | 43 |
| Other Asian | 556 | 3 | 76 | 10 | 21 | 9 | 3 | 11 |
| Other PI | 290 | 1 | 7 | 1 | 4 | 2 | 0 | 0 |
| Total | 20273 | 100 | 784 | 100 | 225 | 100 | 28 | 100 |

*Populations are estimates provided by the California Department of Finance, 2000. Estimates by age and race breakdown were not available from US Census at this time.

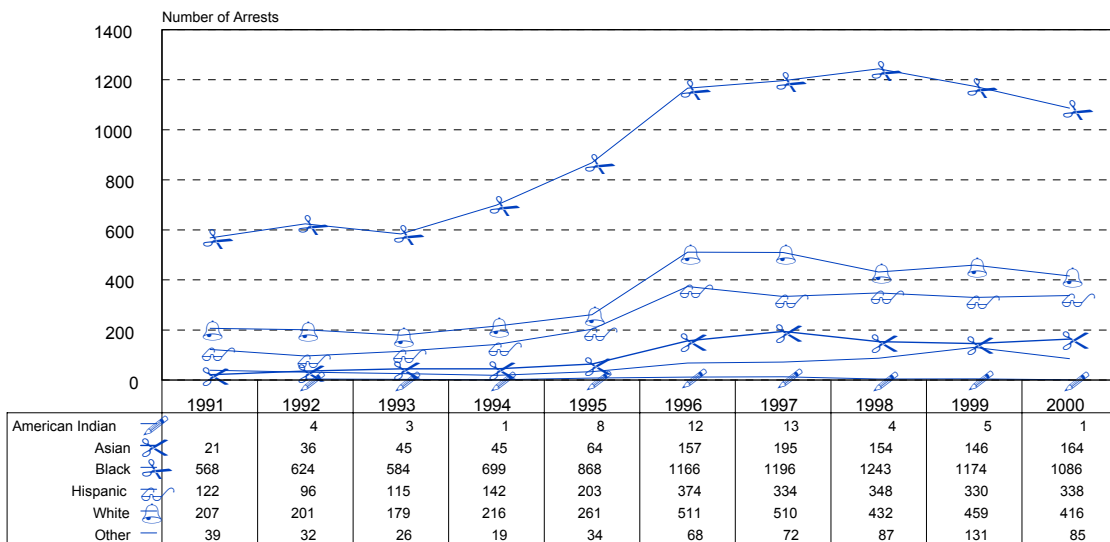
** Population estimates by API ethnic group have not been released for 2000; population estimates reflect 1990 US Census figures.

Source: Alameda County Juvenile Probation Department; US Census, 1990; California Department of Finance, 2000

VIII. API Female Arrests

In Alameda County, females were responsible for 10.5 percent of all juvenile arrests in 1991 and 22.2 percent in 2000 (see Figure 7). This represents an increase of 118.4 percent for the decade. API females experienced the greatest increase, up 681 percent from 1991 statistics, followed by Hispanics (177 percent), Whites (101 percent), and Blacks (91.2 percent). APIs were responsible for between 2.2 percent (1991) and 8.4 percent (1997) of female juvenile arrests per year with a high of 195 arrests in 1997.

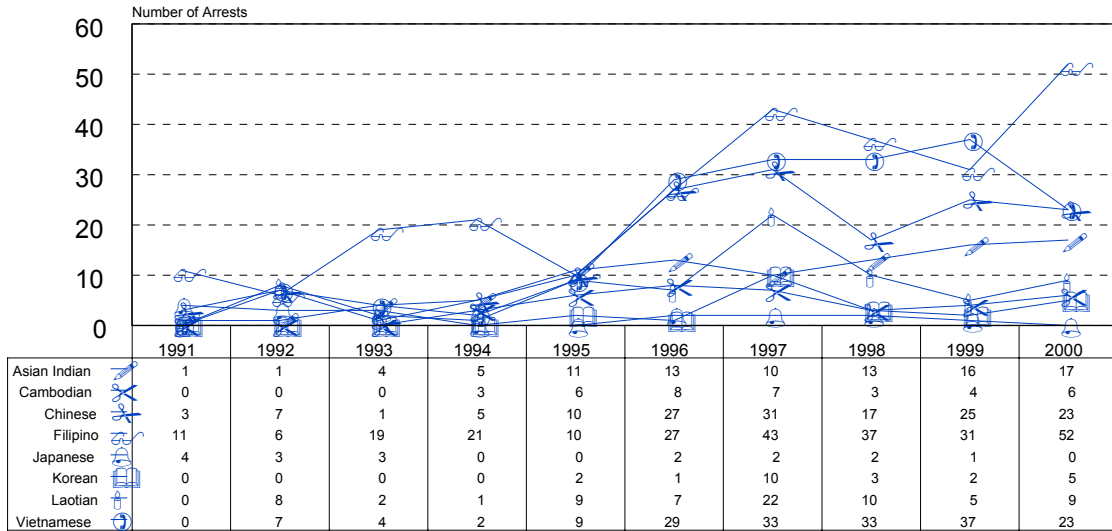
Figure 7
Alameda County
Female Juvenile Arrests by Ethnicity
1991 - 2000



Source: Alameda County Juvenile Probation Department

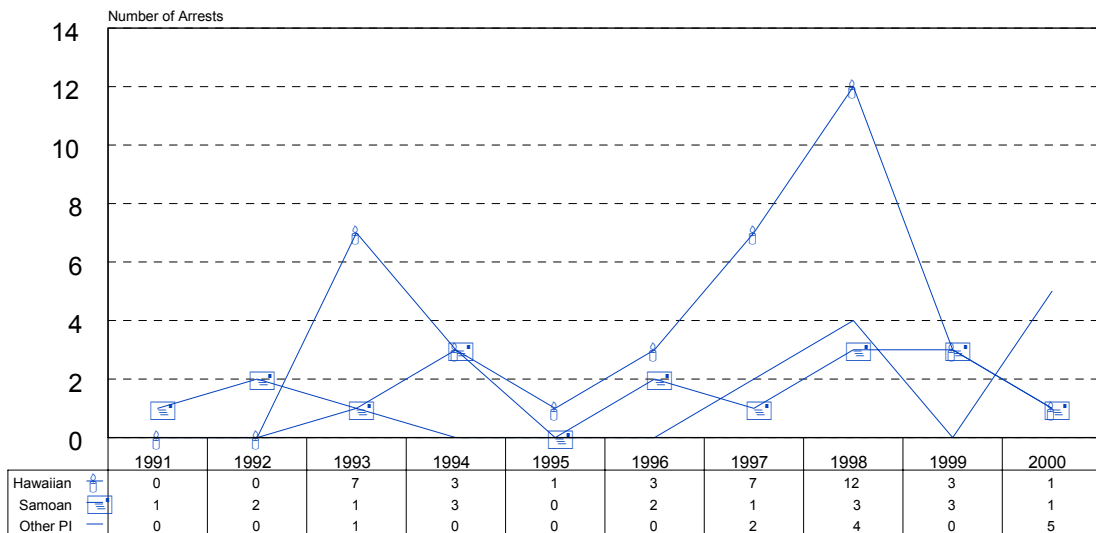
The increase in arrests for API females is a result of increases in Chinese (666.7 percent), Filipino (372.7 percent), and Vietnamese (NA) arrests since 1991 (see Figure 8A). Filipino female juveniles committed the largest number of arrests during the decade. Chinese females comprised the second largest group in the early 90s; by the later half, Vietnamese females became the second largest group.

Figure 8A
Alameda County
Female Juvenile Arrests by Asian Ethnic Group
1991 - 2000



Source: Alameda County Juvenile Probation Department

Figure 8B
Alameda County
Female Pacific Islander Juvenile Arrests
1991 - 2000

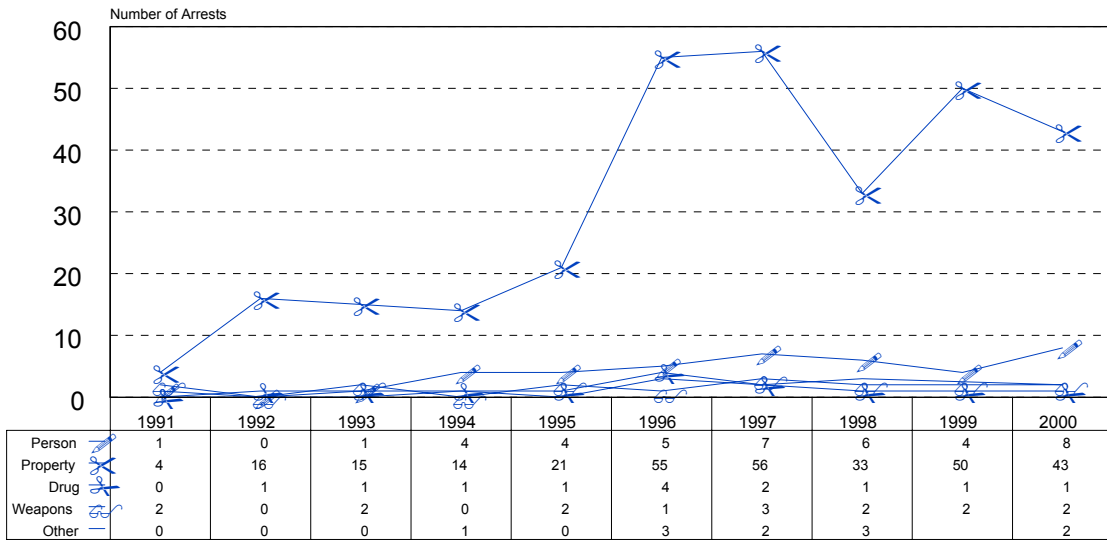


Source: Alameda County Juvenile Probation Department

The majority of API female juvenile felony arrests were made for property offenses, which experienced the greatest change, increasing from 4 arrests in 1991 to 43 arrests in 2000 (see Figure 9). For the nine-year period, Chinese, Filipino, and Vietnamese juveniles were mainly responsible for API female juvenile felony property arrests with Filipino females having the highest numbers (see Table 13).

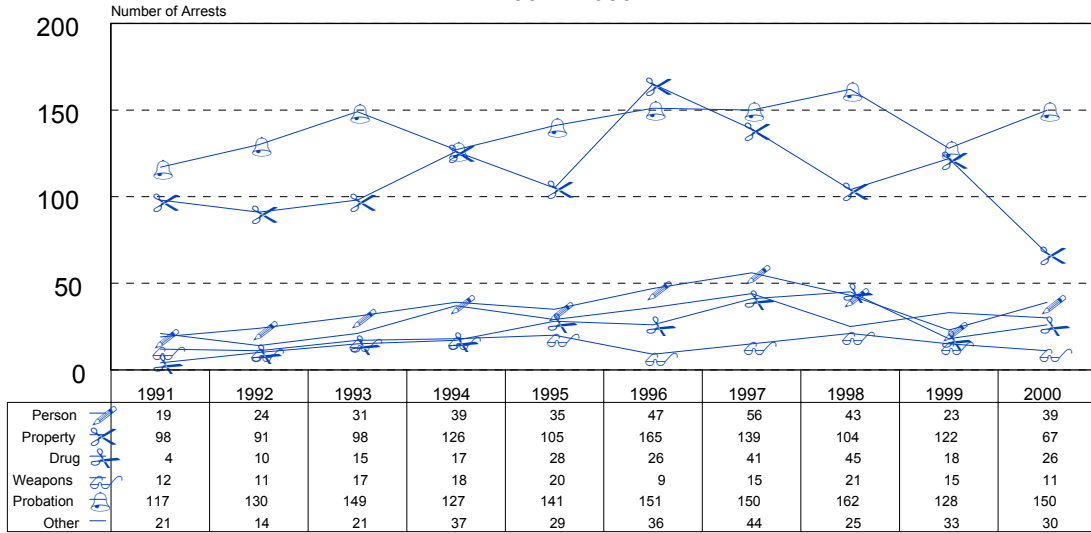
In the misdemeanor/probation violation categories, there has been much greater fluctuation. In general over the last 6 years, the majority of API female juvenile misdemeanor arrests were made for property-related offenses, with a decade high of 67 arrests in 1997 (see Figure 10). Probation violations increased 229 percent, from 7 arrests in 1991 to 38 arrests in 1998. Person offenses also increased, from 1 arrest in 1992 to 26 arrests in 1997.

Figure 9
Alameda County
Female Asian/Pacific Islander Juvenile Felony Arrests by Offense Type
1991 - 2000



Source: Alameda County Juvenile Probation Department

Figure 10
Alameda County
Female Asian/Pacific Islander Juvenile Misdemeanor and Probation Violation
Arrests by OffenseType
1991 - 2000



Source: Alameda County Juvenile Probation Department

Table 13
Alameda County
Female Juvenile Property Offenses by API Ethnic Group
1991 - 2000

| FEMALE FELONY PROPERTY | | | | | | | | | | | | | | | | | | | | | | | | | |
|------------------------|-------|--------------|------|-----------|------|---------|------|----------|------|----------|------|----------|------|--------|-----|---------|------|-------------|-----|--------|-----|------------|------|-----------|------|
| Year | Total | Asian Indian | | Cambodian | | Chinese | | Filipino | | Hawaiian | | Japanese | | Korean | | Laotian | | Pacific Is. | | Samoan | | Vietnamese | | Other API | |
| | No. | No. | %* | No. | %* | No. | %* | No. | %* | No. | %* | No. | %* | No. | %* | No. | %* | No. | %* | No. | %* | No. | %* | No. | %* |
| 1991 | 4 | 0 | 0 | 0 | 0 | 1 | 25.0 | 3 | 75.0 | 0 | 0 | 0 | 0 | 0 | 0 | 0 | 0 | 0 | 0 | 0 | 0 | 0 | 0 | 0 | 0 |
| 1992 | 16 | 1 | 6.3 | 0 | 0 | 3 | 18.8 | 5 | 31.3 | 0 | 0 | 0 | 0 | 0 | 0 | 4 | 25.0 | 0 | 0 | 0 | 0 | 2 | 12.5 | 1 | 6.3 |
| 1993 | 15 | 3 | 20.0 | 0 | 0 | 0 | 0 | 5 | 33.3 | 3 | 20.0 | 2 | 13.3 | 0 | 0 | 1 | 6.7 | 0 | 0 | 0 | 0 | 1 | 6.7 | 0 | 0 |
| 1994 | 14 | 2 | 14.3 | 2 | 14.3 | 1 | 7.1 | 6 | 42.9 | 2 | 14.3 | 0 | 0 | 0 | 0 | 0 | 0 | 0 | 0 | 0 | 0 | 1 | 7.1 | 0 | 0 |
| 1995 | 21 | 3 | 14.3 | 1 | 4.8 | 4 | 19.0 | 4 | 19.0 | 0 | 0 | 0 | 0 | 2 | 9.5 | 3 | 14.3 | 0 | 0 | 0 | 0 | 2 | 9.5 | 2 | 9.5 |
| 1996 | 55 | 5 | 9.1 | 0 | 0 | 9 | 16.4 | 8 | 14.5 | 2 | 3.6 | 1 | 1.8 | 0 | 0 | 1 | 1.8 | 0 | 0 | 0 | 0 | 14 | 25.5 | 15 | 27.3 |
| 1997 | 56 | 3 | 5.4 | 1 | 1.8 | 9 | 16.1 | 6 | 10.7 | 2 | 3.6 | 0 | 0 | 2 | 3.6 | 6 | 10.7 | 0 | 0 | 1 | 1.8 | 15 | 26.8 | 11 | 19.6 |
| 1998 | 33 | 4 | 12.1 | 0 | 0 | 3 | 9.1 | 7 | 21.2 | 1 | 3.0 | 0 | 0 | 2 | 6.1 | 3 | 9.1 | 0 | 0 | 2 | 6.1 | 8 | 24.2 | 3 | 9.1 |
| 1999 | 50 | 4 | 8.0 | 3 | 6.0 | 9 | 18.0 | 8 | 16.0 | 2 | 4.0 | 1 | 2.0 | 0 | 0 | 1 | 2.0 | 0 | 0 | 2 | 4.0 | 11 | 22.0 | 9 | 18.0 |
| 2000 | 43 | 7 | 16.3 | 2 | 4.7 | 6 | 14.0 | 11 | 25.6 | 1 | 2.3 | 0 | 0 | 2 | 4.7 | 0 | 0 | 1 | 2.3 | 0 | 0 | 6 | 14.0 | 7 | 16.3 |
| %*Change | 975 | | ** | | ** | | 500 | | 267 | | ** | | ** | | ** | | ** | | ** | | ** | | ** | | ** |

| FEMALE MISDEMEANOR PROPERTY | | | | | | | | | | | | | | | | | | | | | | | | | |
|-----------------------------|-------|--------------|------|-----------|-----|---------|------|----------|------|----------|-----|----------|----|--------|-----|---------|------|-------------|------|--------|-----|------------|------|-----------|------|
| Year | Total | Asian Indian | | Cambodian | | Chinese | | Filipino | | Hawaiian | | Japanese | | Korean | | Laotian | | Pacific Is. | | Samoan | | Vietnamese | | Other API | |
| | No. | No. | %* | No. | %* | No. | %* | No. | %* | No. | %* | No. | %* | No. | %* | No. | %* | No. | %* | No. | %* | No. | %* | No. | %* |
| 1991 | 3 | 0 | 0 | 0 | 0 | 2 | 66.7 | 1 | 33.3 | 0 | 0 | 0 | 0 | 0 | 0 | 0 | 0 | 0 | 0 | 0 | 0 | 0 | 0 | 0 | 0 |
| 1992 | 5 | 0 | 0 | 0 | 0 | 1 | 20.0 | 1 | 20.0 | 0 | 0 | 0 | 0 | 0 | 0 | 1 | 20.0 | 0 | 0 | 0 | 0 | 2 | 40.0 | 0 | 0 |
| 1993 | 7 | 0 | 0 | 0 | 0 | 0 | 0 | 5 | 71.4 | 0 | 0 | 0 | 0 | 0 | 0 | 0 | 0 | 1 | 14.3 | 0 | 0 | 1 | 14.3 | 0 | 0 |
| 1994 | 9 | 1 | 11.1 | 0 | 0 | 3 | 33.3 | 3 | 33.3 | 0 | 0 | 0 | 0 | 0 | 0 | 0 | 0 | 0 | 0 | 0 | 0 | 1 | 11.1 | 1 | 11.1 |
| 1995 | 23 | 4 | 17.4 | 0 | 0 | 6 | 26.1 | 1 | 4.3 | 1 | 4.3 | 0 | 0 | 0 | 0 | 3 | 13.0 | 0 | 0 | 0 | 0 | 5 | 21.7 | 3 | 13.0 |
| 1996 | 57 | 4 | 7.0 | 2 | 3.5 | 12 | 21.1 | 7 | 12.3 | 0 | 0 | 0 | 0 | 1 | 1.8 | 6 | 10.5 | 0 | 0 | 0 | 0 | 12 | 21.1 | 13 | 22.8 |
| 1997 | 67 | 6 | 9.0 | 3 | 4.5 | 8 | 11.9 | 16 | 23.9 | 1 | 1.5 | 0 | 0 | 2 | 3.0 | 7 | 10.4 | 2 | 3.0 | 0 | 0 | 11 | 16.4 | 11 | 16.4 |
| 1998 | 47 | 4 | 8.5 | 0 | 0 | 8 | 17.0 | 12 | 25.5 | 2 | 4.3 | 0 | 0 | 1 | 2.1 | 5 | 10.6 | 0 | 0 | 1 | 2.1 | 4 | 8.5 | 10 | 21.3 |
| 1999 | 50 | 8 | 16.0 | 0 | 0 | 9 | 18.0 | 9 | 18.0 | 0 | 0 | 0 | 0 | 1 | 2.0 | 2 | 4.0 | 0 | 0 | 0 | 0 | 14 | 28.0 | 7 | 14.0 |
| 2000 | 60 | 1 | 1.7 | 1 | 1.7 | 12 | 20.0 | 21 | 35.0 | 0 | 0 | 0 | 0 | 2 | 3.3 | 4 | 6.7 | 0 | 0 | 0 | 0 | 10 | 16.7 | 9 | 15.0 |
| %*Change | 1900 | | ** | | ** | | 500 | | 2000 | | ** | | ** | | ** | | ** | | ** | | ** | | ** | | ** |

Source: Alameda County Juvenile Probation Department
 *All percentages may not add up to 100 percent due to rounding.
 **Indivisible by zero, number is undefined.

Table 14
Alameda County
Female Juvenile Offenses Against Persons by API Ethnic Group
1991 - 2000

| FEMALE FELONY OFFENSES AGAINST PERSONS | | | | | | | | | | | | | | | | | | | | | | | | | |
|--|-------|--------------|------|-----------|------|---------|------|----------|------|----------|------|----------|------|--------|------|---------|------|-------------|------|--------|----|------------|------|-----------|------|
| Year | Total | Asian Indian | | Cambodian | | Chinese | | Filipino | | Hawaiian | | Japanese | | Korean | | Laotian | | Pacific Is. | | Samoan | | Vietnamese | | Other API | |
| | No. | No. | %* | No. | %* | No. | %* | No. | %* | No. | %* | No. | %* | No. | %* | No. | %* | No. | %* | No. | %* | No. | %* | No. | %* |
| 1991 | 1 | 0 | 0 | 0 | 0 | 0 | 0 | 1 | 100 | 0 | 0 | 0 | 0 | 0 | 0 | 0 | 0 | 0 | 0 | 0 | 0 | 0 | 0 | 0 | 0 |
| 1992 | 0 | 0 | 0 | 0 | 0 | 0 | 0 | 0 | 0 | 0 | 0 | 0 | 0 | 0 | 0 | 0 | 0 | 0 | 0 | 0 | 0 | 0 | 0 | 0 | 0 |
| 1993 | 1 | 0 | 0 | 0 | 0 | 0 | 0 | 0 | 0 | 1 | 100 | 0 | 0 | 0 | 0 | 0 | 0 | 0 | 0 | 0 | 0 | 0 | 0 | 0 | 0 |
| 1994 | 4 | 0 | 0 | 1 | 25 | 0 | 0 | 1 | 25 | 0 | 0 | 0 | 0 | 0 | 0 | 0 | 0 | 0 | 0 | 2 | 50 | 0 | 0 | 0 | 0 |
| 1995 | 4 | 0 | 0 | 2 | 50 | 0 | 0 | 1 | 25 | 0 | 0 | 0 | 0 | 0 | 0 | 0 | 0 | 0 | 0 | 0 | 0 | 1 | 25 | 0 | 0 |
| 1996 | 5 | 0 | 0 | 1 | 20 | 1 | 20 | 1 | 20 | 0 | 0 | 0 | 0 | 0 | 0 | 0 | 0 | 0 | 0 | 1 | 20 | 0 | 0 | 1 | 20.0 |
| 1997 | 7 | 0 | 0 | 0 | 0 | 0 | 0 | 0 | 0 | 2 | 28.6 | 1 | 14.3 | 1 | 14.3 | 1 | 14.3 | 0 | 0 | 0 | 0 | 1 | 14.3 | 1 | 14.3 |
| 1998 | 6 | 1 | 16.7 | 1 | 16.7 | 1 | 16.7 | 2 | 33.3 | 0 | 0 | 0 | 0 | 0 | 0 | 0 | 0 | 1 | 16.7 | 0 | 0 | 0 | 0 | 0 | 0 |
| 1999 | 4 | 0 | 0 | 0 | 0 | 2 | 50 | 0 | 0 | 0 | 0 | 0 | 0 | 1 | 25 | 0 | 0 | 0 | 0 | 0 | 0 | 1 | 25 | 0 | 0 |
| 2000 | 8 | 0 | 0 | 1 | 12.5 | 1 | 12.5 | 2 | 25 | 0 | 0 | 0 | 0 | 0 | 0 | 2 | 25 | 0 | 0 | 0 | 0 | 1 | 12.5 | 1 | 12.5 |
| %*Change | 700 | | ** | | ** | | ** | | 100 | | ** | | ** | | ** | | ** | | ** | | ** | | ** | | ** |

| FEMALE MISDEMEANOR OFFENSES AGAINST PERSONS | | | | | | | | | | | | | | | | | | | | | | | | | |
|---|-------|--------------|------|-----------|-----|---------|------|----------|------|----------|------|----------|-----|--------|------|---------|------|-------------|----|--------|------|------------|------|-----------|------|
| Year | Total | Asian Indian | | Cambodian | | Chinese | | Filipino | | Hawaiian | | Japanese | | Korean | | Laotian | | Pacific Is. | | Samoan | | Vietnamese | | Other API | |
| | No. | No. | %* | No. | %* | No. | %* | No. | %* | No. | %* | No. | %* | No. | %* | No. | %* | No. | %* | No. | %* | No. | %* | No. | %* |
| 1991 | 2 | 0 | 0 | 0 | 0 | 0 | 0 | 2 | 100 | 0 | 0 | 0 | 0 | 0 | 0 | 0 | 0 | 0 | 0 | 0 | 0 | 0 | 0 | 0 | 0 |
| 1992 | 1 | 0 | 0 | 0 | 0 | 0 | 0 | 0 | 0 | 0 | 0 | 0 | 0 | 0 | 0 | 0 | 0 | 0 | 0 | 0 | 0 | 0 | 0 | 1 | 100 |
| 1993 | 6 | 0 | 0 | 0 | 0 | 0 | 0 | 3 | 50.0 | 1 | 16.7 | 0 | 0 | 0 | 0 | 0 | 0 | 0 | 0 | 1 | 16.7 | 0 | 0 | 1 | 16.7 |
| 1994 | 4 | 0 | 0 | 0 | 0 | 0 | 0 | 4 | 100 | 0 | 0 | 0 | 0 | 0 | 0 | 0 | 0 | 0 | 0 | 0 | 0 | 0 | 0 | 0 | 0 |
| 1995 | 5 | 0 | 0 | 0 | 0 | 0 | 0 | 2 | 40.0 | 0 | 0 | 0 | 0 | 0 | 0 | 3 | 60 | 0 | 0 | 0 | 0 | 0 | 0 | 0 | 0 |
| 1996 | 6 | 2 | 33.3 | 3 | 50 | 0 | 0 | 0 | 0 | 0 | 0 | 0 | 0 | 0 | 0 | 0 | 0 | 0 | 1 | 16.7 | 0 | 0 | 0 | 0 | 0 |
| 1997 | 26 | 1 | 3.8 | 2 | 7.7 | 3 | 11.5 | 6 | 23.1 | 0 | 0 | 1 | 3.8 | 3 | 11.5 | 4 | 15.4 | 0 | 0 | 0 | 0 | 3 | 11.5 | 3 | 11.5 |
| 1998 | 10 | 4 | 40 | 0 | 0 | 1 | 10 | 1 | 10 | 0 | 0 | 0 | 0 | 0 | 0 | 0 | 0 | 3 | 30 | 0 | 0 | 1 | 10 | 0 | 0 |
| 1999 | 11 | 3 | 27.3 | 0 | 0 | 3 | 27.3 | 2 | 18.2 | 0 | 0 | 0 | 0 | 0 | 0 | 0 | 0 | 0 | 0 | 0 | 0 | 2 | 18.2 | 1 | 9.1 |
| 2000 | 9 | 2 | 22.2 | 0 | 0 | 1 | 11.1 | 4 | 44.4 | 0 | 0 | 0 | 0 | 1 | 11.1 | 0 | 0 | 0 | 0 | 0 | 0 | 0 | 0 | 1 | 11.1 |
| %*Change | 350 | | ** | | ** | | ** | | 100 | | ** | | ** | | ** | | ** | | ** | | ** | | ** | | ** |

Source: Alameda County Juvenile Probation Department
 *All percentages may not add up to 100 percent due to rounding.
 **Indivisible by zero, number is undefined.

Table 15
Alameda County
Female Juvenile Drug Offenses by API Ethnic Group
1991 - 2000

| FEMALE FELONY DRUG | | | | | | | | | | | | | | | | | | | | | | | |
|--------------------|-------|--------------|-----|-----------|----|---------|-----|----------|-----|----------|----|----------|-----|--------|-----|---------|-------------|--------|------------|-----|-----------|-----|-----|
| Year | Total | Asian Indian | | Cambodian | | Chinese | | Filipino | | Hawaiian | | Japanese | | Korean | | Laotian | Pacific Is. | Samoan | Vietnamese | | Other API | | |
| | No. | No. | %* | No. | %* | No. | %* | No. | %* | No. | %* | No. | %* | No. | %* | No. | %* | No. | %* | No. | %* | No. | %* |
| 1991 | 0 | 0 | 0 | 0 | 0 | 0 | 0 | 0 | 0 | 0 | 0 | 0 | 0 | 0 | 0 | 0 | 0 | 0 | 0 | 0 | 0 | 0 | 0 |
| 1992 | 1 | 0 | 0 | 0 | 0 | 0 | 0 | 0 | 0 | 0 | 0 | 1 | 100 | 0 | 0 | 0 | 0 | 0 | 0 | 0 | 0 | 0 | 0 |
| 1993 | 1 | 0 | 0 | 0 | 0 | 0 | 0 | 1 | 100 | 0 | 0 | 0 | 0 | 0 | 0 | 0 | 0 | 0 | 0 | 0 | 0 | 0 | 0 |
| 1994 | 1 | 0 | 0 | 0 | 0 | 0 | 0 | 1 | 100 | 0 | 0 | 0 | 0 | 0 | 0 | 0 | 0 | 0 | 0 | 0 | 0 | 0 | 0 |
| 1995 | 1 | 1 | 100 | 0 | 0 | 0 | 0 | 0 | 0 | 0 | 0 | 0 | 0 | 0 | 0 | 0 | 0 | 0 | 0 | 0 | 0 | 0 | 0 |
| 1996 | 4 | 0 | 0 | 0 | 0 | 1 | 25 | 2 | 50 | 0 | 0 | 0 | 0 | 0 | 0 | 0 | 0 | 0 | 0 | 0 | 0 | 1 | 25 |
| 1997 | 2 | 0 | 0 | 0 | 0 | 2 | 100 | 0 | 0 | 0 | 0 | 0 | 0 | 0 | 0 | 0 | 0 | 0 | 0 | 0 | 0 | 0 | 0 |
| 1998 | 1 | 0 | 0 | 0 | 0 | 0 | 0 | 0 | 0 | 0 | 0 | 0 | 0 | 0 | 0 | 0 | 0 | 0 | 0 | 0 | 0 | 1 | 100 |
| 1999 | 1 | 0 | 0 | 0 | 0 | 0 | 0 | 0 | 0 | 0 | 0 | 0 | 0 | 0 | 1 | 100 | 0 | 0 | 0 | 0 | 0 | 0 | 0 |
| 2000 | 1 | 0 | 0 | 0 | 0 | 0 | 0 | 0 | 0 | 0 | 0 | 0 | 0 | 1 | 100 | 0 | 0 | 0 | 0 | 0 | 0 | 0 | 0 |
| %*Change | ** | ** | ** | ** | ** | ** | ** | ** | ** | ** | ** | ** | ** | ** | ** | ** | ** | ** | ** | ** | ** | ** | ** |

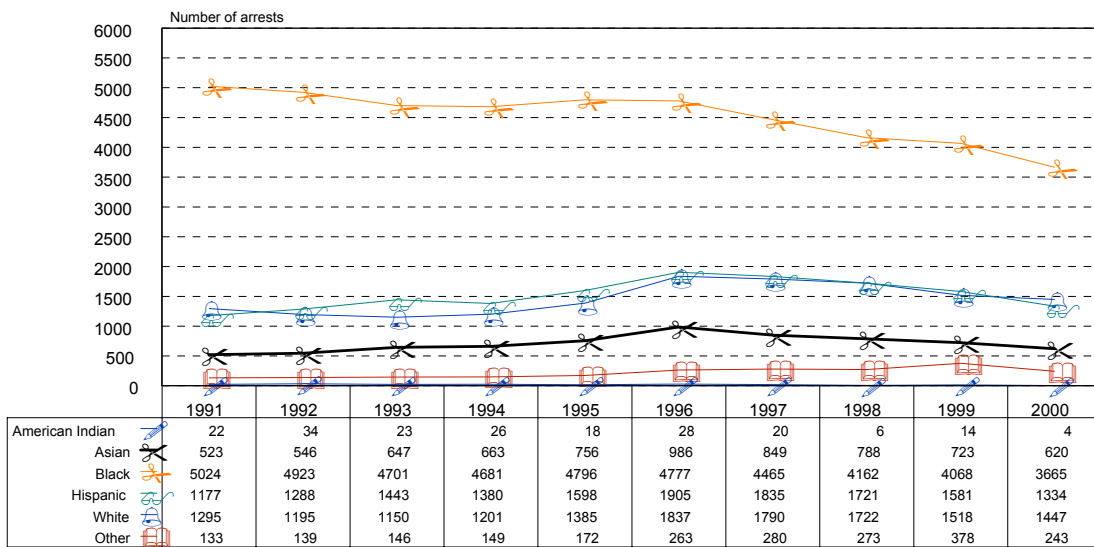
| FEMALE MISDEMEANOR DRUG | | | | | | | | | | | | | | | | | | | | | | | |
|-------------------------|-------|--------------|----|-----------|----|---------|------|----------|------|----------|------|----------|------|--------|----|---------|-------------|--------|------------|-----|-----------|-----|------|
| Year | Total | Asian Indian | | Cambodian | | Chinese | | Filipino | | Hawaiian | | Japanese | | Korean | | Laotian | Pacific Is. | Samoan | Vietnamese | | Other API | | |
| | No. | No. | %* | No. | %* | No. | %* | No. | %* | No. | %* | No. | %* | No. | %* | No. | %* | No. | %* | No. | %* | No. | %* |
| 1991 | 0 | 0 | 0 | 0 | 0 | 0 | 0 | 0 | 0 | 0 | 0 | 0 | 0 | 0 | 0 | 0 | 0 | 0 | 0 | 0 | 0 | 0 | 0 |
| 1992 | 1 | 0 | 0 | 0 | 0 | 0 | 0 | 0 | 0 | 0 | 0 | 0 | 0 | 0 | 0 | 0 | 0 | 1 | 100 | 0 | 0 | 0 | 0 |
| 1993 | 1 | 0 | 0 | 0 | 0 | 0 | 0 | 0 | 0 | 1 | 100 | 0 | 0 | 0 | 0 | 0 | 0 | 0 | 0 | 0 | 0 | 0 | 0 |
| 1994 | 2 | 1 | 50 | 0 | 0 | 0 | 0 | 1 | 50 | 0 | 0 | 0 | 0 | 0 | 0 | 0 | 0 | 0 | 0 | 0 | 0 | 0 | 0 |
| 1995 | 0 | 0 | 0 | 0 | 0 | 0 | 0 | 0 | 0 | 0 | 0 | 0 | 0 | 0 | 0 | 0 | 0 | 0 | 0 | 0 | 0 | 0 | 0 |
| 1996 | 1 | 0 | 0 | 0 | 0 | 0 | 0 | 1 | 100 | 0 | 0 | 0 | 0 | 0 | 0 | 0 | 0 | 0 | 0 | 0 | 0 | 0 | 0 |
| 1997 | 7 | 0 | 0 | 0 | 0 | 2 | 28.6 | 3 | 42.9 | 0 | 0 | 2 | 28.6 | 0 | 0 | 0 | 0 | 0 | 0 | 0 | 0 | 0 | 0 |
| 1998 | 6 | 0 | 0 | 0 | 0 | 0 | 0 | 1 | 16.7 | 2 | 33.3 | 0 | 0 | 0 | 0 | 0 | 0 | 0 | 0 | 1 | 16.7 | 2 | 33.3 |
| 1999 | 2 | 0 | 0 | 0 | 0 | 0 | 0 | 1 | 50.0 | 0 | 0 | 0 | 0 | 0 | 0 | 0 | 0 | 0 | 0 | 0 | 0 | 1 | 50.0 |
| 2000 | 8 | 0 | 0 | 0 | 0 | 1 | 12.5 | 4 | 50.0 | 0 | 0 | 0 | 0 | 0 | 0 | 1 | 12.5 | 0 | 0 | 0 | 0 | 2 | 25.0 |
| %*Change | ** | ** | ** | ** | ** | ** | ** | ** | ** | ** | ** | ** | ** | ** | ** | ** | ** | ** | ** | ** | ** | ** | ** |

Source: Alameda County Juvenile Probation Department
 *All percentages may not add up to 100 percent due to rounding.
 **Indivisible by zero, number is undefined.

IX. API Male Arrests

In Alameda County, males were responsible for 89.5 percent of all juvenile arrests in 1991 and 77.8 percent in 2000. In contrast to the arrest statistics for females, this represents a decrease of 10.5 percent for the decade. American Indian (-81.8 percent) and Black (-27.1 percent) males experienced the only decreases of the decade (see Figure 11). The decrease in Black arrests is most significant because Blacks were responsible for between 48 percent (1998) and 61.5 percent (1991) of total male juvenile arrests. API males, having the lowest numbers, were responsible for 6.4 percent (1991) to 10.1 percent (1996) of total male juvenile arrests with a decade high of 986 arrests in 1996.

Figure 11
Alameda County
Male Juvenile Arrests by Ethnicity
1991 - 2000

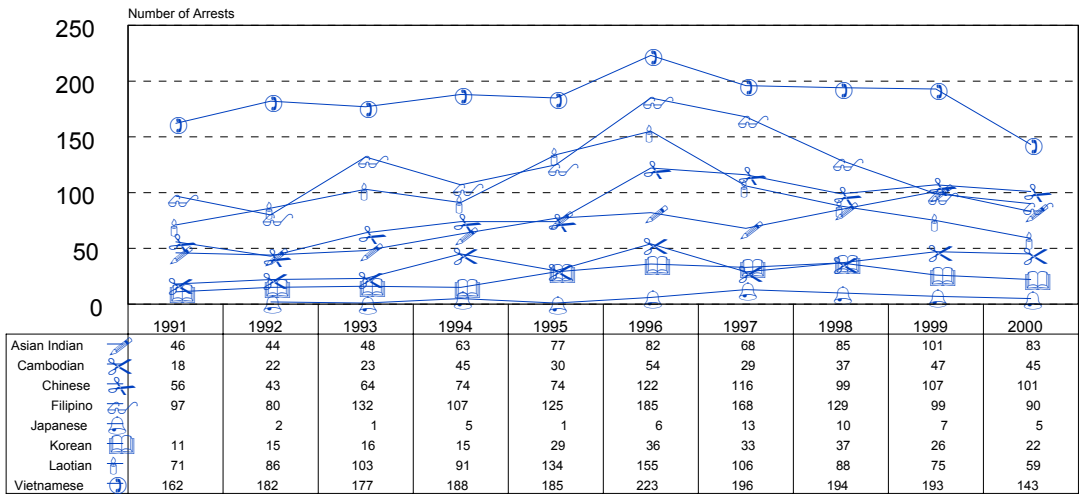


Source: Alameda County Juvenile Probation Department

Decreases in Vietnamese (-11.7 percent), Laotian (-16.9 percent), and Filipino (-7.2 percent) arrests (see Figure 12A) resulted in the decrease seen for total API male juvenile arrests. Although Laotians experienced the greatest decrease, they were only responsible for between 9.5 percent (2000) and 17.7 percent (1995) of total male API juvenile arrests, while Vietnamese were responsible for between 22.6 percent (1996) and 33.3 percent (1992). Vietnamese males had a decade high of 223 arrests (22.6 percent of total) in 1996. Filipino males were responsible for 13.7 percent (1999) to 20.4 percent (1993) of total male API juvenile arrests, with their decade high of 185 arrests in 1996.

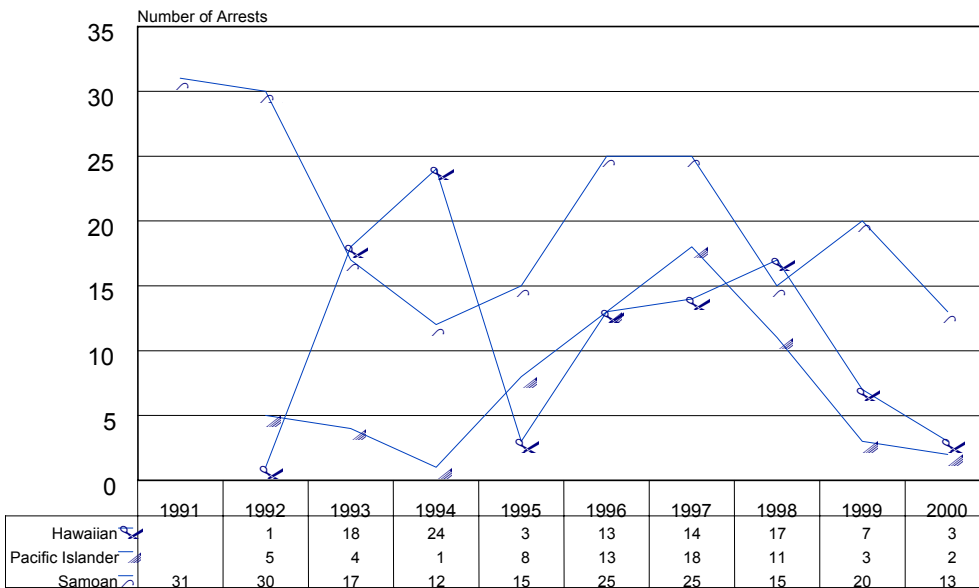
The majority of API male juvenile felony arrests were for property offenses that increased from 175 arrests in 1991 to 200 arrests in 2000, or 14.3 percent (see Figure 13). Felony person offenses also increased 67.7 percent, from 31 arrests in 1991 to 52 arrests in 2000. During the ten-year period, Chinese, Filipino, and Vietnamese juveniles were mainly responsible for API arrests with Vietnamese having the highest numbers. For instance, in 2000, Vietnamese were responsible for 26 percent of API male juvenile felony property arrests followed by Chinese (15.5 percent) and Filipino (13 percent) (see Table 16). Chinese juvenile males lead in the felony person category in terms of total arrests for the nine-year period (see Table 17).

Figure 12A
Alameda County
Male Juvenile Arrests by Asian Ethnic Group
1991 - 2000



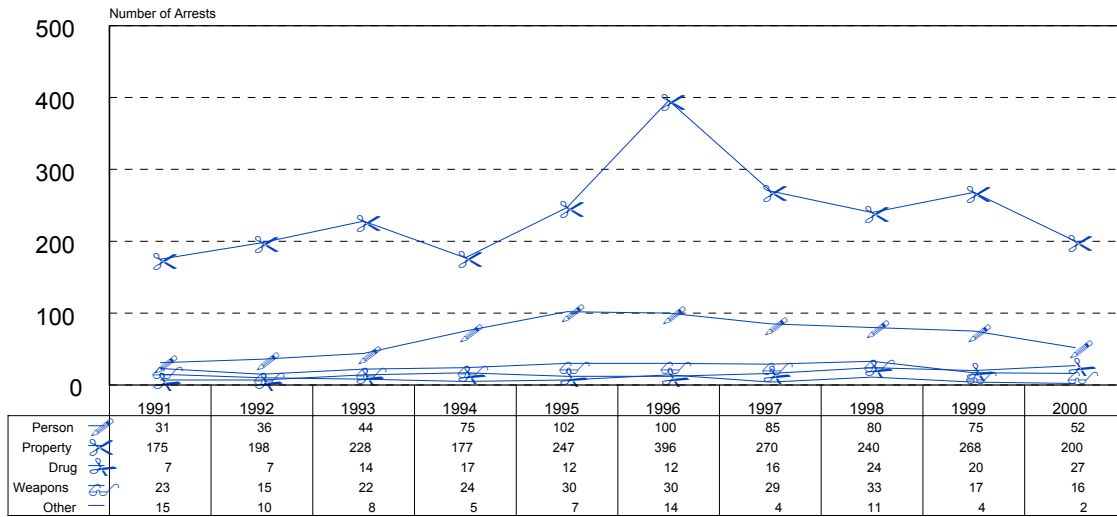
Source: Alameda County Juvenile Probation Department

Figure 12B
Alameda County
Male Pacific Islander Juvenile Arrests
1991-2000



Source: Alameda County Probation

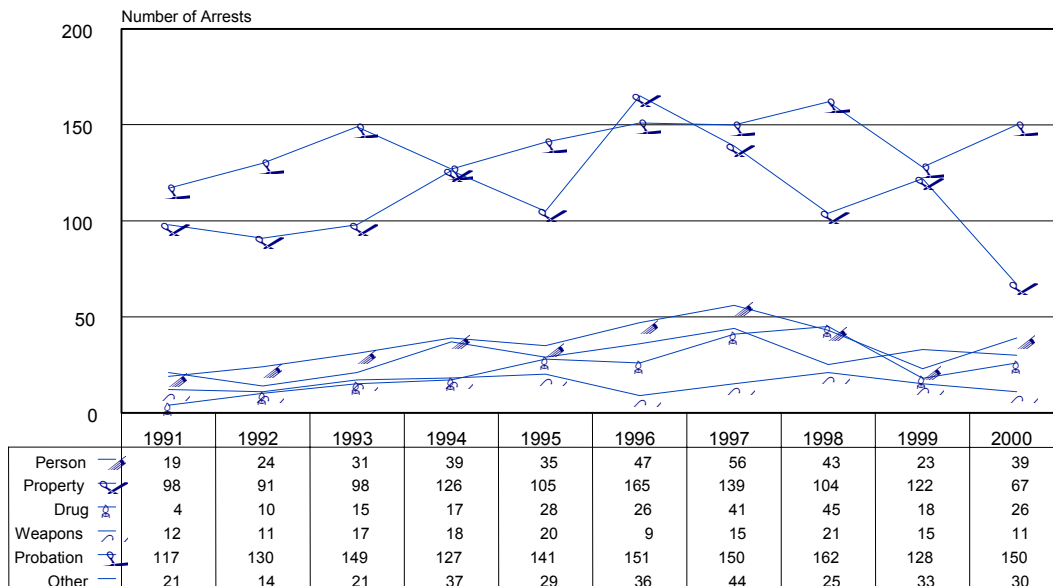
Figure 13
Alameda County
Male Asian/Pacific Islander Juvenile Felony Arrests by Offense Type
1991 - 2000



Source: Alameda County Juvenile Probation Department

There was much greater fluctuation in the misdemeanor/probation violation categories. Probation violations were consistent in terms of capturing the majority of arrests (see figure 14). In 2000, parole/probation violations accounted for 46.4 percent of total API juvenile arrests followed by property offenses (20.7 percent) and crimes against persons (12.1 percent). While Vietnamese lead overall in probation violations, Chinese lead in crimes against persons.

Figure 14
Alameda County
Male Asian Pacific Islander Juvenile Misdemeanor/Probation Violation
Arrests by Offense Type
1991-2000



Source: Alameda County Juvenile Probation Department

Table 16
Alameda County
Male Juvenile Property Offenses by API Ethnic Group
1991 – 2000

| MALE FELONY PROPERTY | | | | | | | | | | | | | | | | | | | | | | | | | |
|----------------------|-------|--------------|------|-----------|-----|---------|------|----------|------|----------|-----|----------|-----|--------|-----|---------|------|-------------|-----|--------|-----|------------|------|-----------|------|
| Year | Total | Asian Indian | | Cambodian | | Chinese | | Filipino | | Hawaiian | | Japanese | | Korean | | Laotian | | Pacific Is. | | Samoan | | Vietnamese | | Other API | |
| | No. | No. | %* | No. | %* | No. | %* | No. | %* | No. | %* | No. | %* | No. | %* | No. | %* | No. | %* | No. | %* | No. | %* | No. | %* |
| 1991 | 175 | 13 | 7.4 | 11 | 6.3 | 11 | 6.3 | 29 | 16.6 | 0 | 0.0 | 0 | 0.0 | 3 | 1.7 | 21 | 12.0 | 0 | 0.0 | 12 | 6.9 | 63 | 36.0 | 12 | 6.9 |
| 1992 | 198 | 12 | 6.1 | 9 | 4.5 | 19 | 9.6 | 21 | 10.6 | 1 | 0.5 | 0 | 0.0 | 6 | 3.0 | 35 | 17.7 | 1 | 0.5 | 9 | 4.5 | 75 | 37.9 | 10 | 5.1 |
| 1993 | 228 | 23 | 10.1 | 3 | 1.3 | 24 | 10.5 | 28 | 12.3 | 3 | 1.3 | 1 | 0.4 | 5 | 2.2 | 38 | 16.7 | 0 | 0.0 | 2 | 0.9 | 86 | 37.7 | 15 | 6.6 |
| 1994 | 177 | 8 | 4.5 | 9 | 5.1 | 20 | 11.3 | 20 | 11.3 | 6 | 3.4 | 0 | 0.0 | 7 | 4.0 | 32 | 18.1 | 0 | 0.0 | 1 | 0.6 | 65 | 36.7 | 9 | 5.1 |
| 1995 | 247 | 19 | 7.7 | 11 | 4.5 | 27 | 10.9 | 25 | 10.1 | 1 | 0.4 | 1 | 0.4 | 13 | 5.3 | 49 | 19.8 | 0 | 0.0 | 1 | 0.4 | 73 | 29.6 | 27 | 10.9 |
| 1996 | 396 | 24 | 6.1 | 28 | 7.1 | 47 | 11.9 | 55 | 13.9 | 7 | 1.8 | 1 | 0.3 | 18 | 4.5 | 83 | 21.0 | 3 | 0.8 | 8 | 2.0 | 96 | 24.2 | 26 | 6.6 |
| 1997 | 270 | 19 | 7.0 | 7 | 2.6 | 39 | 14.4 | 47 | 17.4 | 1 | 0.4 | 3 | 1.1 | 12 | 4.4 | 44 | 16.3 | 3 | 1.1 | 2 | 0.7 | 76 | 28.1 | 17 | 6.3 |
| 1998 | 240 | 19 | 7.9 | 17 | 7.1 | 38 | 15.8 | 34 | 14.2 | 0 | 0.0 | 0 | 0.0 | 11 | 4.6 | 30 | 12.5 | 2 | 0.8 | 1 | 0.4 | 75 | 31.3 | 13 | 5.4 |
| 1999 | 268 | 30 | 11.2 | 23 | 8.6 | 42 | 15.7 | 24 | 9.0 | 1 | 0.4 | 3 | 1.1 | 10 | 3.7 | 35 | 13.1 | 0 | 0.0 | 5 | 1.9 | 83 | 31.0 | 12 | 4.5 |
| 2000 | 200 | 15 | 7.5 | 18 | 9.0 | 31 | 15.5 | 26 | 13.0 | 0 | 0.0 | 1 | 0.5 | 7 | 3.5 | 30 | 15.0 | 1 | 0.5 | 1 | 0.5 | 52 | 26.0 | 18 | 9.0 |
| %*Change | 14 | 15 | | 64 | | 182 | | -10 | | ** | | ** | | 133 | | 43 | | ** | | -92 | | -17 | | 50 | |

| MALE MISDEMEANOR PROPERTY | | | | | | | | | | | | | | | | | | | | | | | | | |
|---------------------------|-------|--------------|------|-----------|-----|---------|------|----------|------|----------|-----|----------|-----|--------|-----|---------|------|-------------|-----|--------|-----|------------|------|-----------|------|
| Year | Total | Asian Indian | | Cambodian | | Chinese | | Filipino | | Hawaiian | | Japanese | | Korean | | Laotian | | Pacific Is. | | Samoan | | Vietnamese | | Other API | |
| | No. | No. | %* | No. | %* | No. | %* | No. | %* | No. | %* | No. | %* | No. | %* | No. | %* | No. | %* | No. | %* | No. | %* | No. | %* |
| 1991 | 98 | 5 | 5.1 | 4 | 4.1 | 8 | 8.2 | 25 | 25.5 | 0 | 0.0 | 0 | 0.0 | 3 | 3.1 | 18 | 18.4 | 0 | 0.0 | 2 | 2.0 | 30 | 30.6 | 3 | 3.1 |
| 1992 | 91 | 6 | 6.6 | 1 | 1.1 | 6 | 6.6 | 15 | 16.5 | 0 | 0.0 | 0 | 0.0 | 4 | 4.4 | 16 | 17.6 | 1 | 1.1 | 2 | 2.2 | 36 | 39.6 | 4 | 4.4 |
| 1993 | 98 | 4 | 4.1 | 3 | 3.1 | 14 | 14.3 | 35 | 35.7 | 1 | 1.0 | 0 | 0.0 | 1 | 1.0 | 13 | 13.3 | 0 | 0.0 | 1 | 1.0 | 16 | 16.3 | 10 | 10.2 |
| 1994 | 126 | 3 | 2.4 | 5 | 4.0 | 15 | 11.9 | 24 | 19.0 | 2 | 1.6 | 2 | 1.6 | 2 | 1.6 | 16 | 12.7 | 1 | 0.8 | 1 | 0.8 | 47 | 37.3 | 8 | 6.3 |
| 1995 | 105 | 13 | 12.4 | 3 | 2.9 | 11 | 10.5 | 29 | 27.6 | 1 | 1.0 | 0 | 0.0 | 5 | 4.8 | 11 | 10.5 | 0 | 0.0 | 0 | 0.0 | 25 | 23.8 | 7 | 6.7 |
| 1996 | 165 | 18 | 10.9 | 4 | 2.4 | 27 | 16.4 | 45 | 27.3 | 2 | 1.2 | 1 | 0.6 | 4 | 2.4 | 18 | 10.9 | 3 | 1.8 | 1 | 0.6 | 27 | 16.4 | 15 | 9.1 |
| 1997 | 139 | 19 | 13.7 | 2 | 1.4 | 28 | 20.1 | 29 | 20.9 | 1 | 0.7 | 1 | 0.7 | 7 | 5.0 | 13 | 9.4 | 6 | 4.3 | 2 | 1.4 | 25 | 18.0 | 6 | 4.3 |
| 1998 | 104 | 13 | 12.5 | 2 | 1.9 | 21 | 20.2 | 19 | 18.3 | 2 | 1.9 | 2 | 1.9 | 4 | 3.8 | 5 | 4.8 | 0 | 0.0 | 2 | 1.9 | 17 | 16.3 | 17 | 16.3 |
| 1999 | 122 | 24 | 19.7 | 4 | 3.3 | 19 | 15.6 | 31 | 25.4 | 0 | 0.0 | 3 | 2.5 | 5 | 4.1 | 2 | 1.6 | 2 | 1.6 | 1 | 0.8 | 22 | 18.0 | 9 | 7.4 |
| 2000 | 67 | 18 | 26.9 | 3 | 4.5 | 12 | 17.9 | 13 | 19.4 | 0 | 0.0 | 0 | 0.0 | 3 | 4.5 | 1 | 1.5 | 0 | 0.0 | 2 | 3.0 | 10 | 14.9 | 5 | 7.5 |
| %*Change | -32 | 260 | | -25 | | 50 | | -48 | | ** | | ** | | 0 | | -94 | | ** | | 0 | | -67 | | 67 | |

Source: Alameda County Juvenile Probation Department

*All percentages may not add up to 100 percent due to rounding.

**Indivisible by zero, number is undefined.

Table 17
Alameda County
Male Juvenile Offenses Against Persons by API Ethnic Group
1991 – 2000

| FELONY OFFENSES AGAINST PERSONS | | | | | | | | | | | | | | | | | | | | | | | | | |
|---------------------------------|-------|--------------|------|-----------|-----|---------|------|----------|------|----------|-----|----------|-----|--------|-----|---------|------|-------------|-----|--------|-----|------------|------|-----------|-----|
| Year | Total | Asian Indian | | Cambodian | | Chinese | | Filipino | | Hawaiian | | Japanese | | Korean | | Laotian | | Pacific Is. | | Samoan | | Vietnamese | | Other API | |
| | No. | No. | %* | No. | %* | No. | %* | No. | %* | No. | %* | No. | %* | No. | %* | No. | %* | No. | %* | No. | %* | No. | %* | No. | %* |
| 1991 | 31 | 3 | 9.7 | 1 | 3.2 | 6 | 19.4 | 8 | 25.8 | 0 | 0.0 | 0 | 0.0 | 1 | 3.2 | 3 | 9.7 | 0 | 0.0 | 2 | 6.5 | 6 | 19.4 | 1 | 3.2 |
| 1992 | 36 | 6 | 16.7 | 1 | 2.8 | 3 | 8.3 | 8 | 22.2 | 0 | 0.0 | 0 | 0.0 | 0 | 0.0 | 4 | 11.1 | 0 | 0.0 | 2 | 5.6 | 9 | 25.0 | 3 | 8.3 |
| 1993 | 44 | 4 | 9.1 | 2 | 4.5 | 4 | 9.1 | 13 | 29.5 | 3 | 6.8 | 0 | 0.0 | 1 | 2.3 | 8 | 18.2 | 0 | 0.0 | 1 | 2.3 | 7 | 15.9 | 1 | 2.3 |
| 1994 | 75 | 8 | 10.7 | 3 | 4.0 | 10 | 13.3 | 12 | 16.0 | 3 | 4.0 | 0 | 0.0 | 1 | 1.3 | 12 | 16.0 | 0 | 0.0 | 4 | 5.3 | 16 | 21.3 | 6 | 8.0 |
| 1995 | 102 | 10 | 9.8 | 3 | 2.9 | 17 | 16.7 | 12 | 11.8 | 0 | 0.0 | 0 | 0.0 | 1 | 1.0 | 13 | 12.7 | 3 | 2.9 | 5 | 4.9 | 28 | 27.5 | 10 | 9.8 |
| 1996 | 100 | 10 | 10.0 | 3 | 3.0 | 19 | 19.0 | 21 | 21.0 | 0 | 0.0 | 1 | 1.0 | 3 | 3.0 | 7 | 7.0 | 3 | 3.0 | 5 | 5.0 | 22 | 22.0 | 6 | 6.0 |
| 1997 | 85 | 9 | 10.6 | 7 | 8.2 | 12 | 14.1 | 14 | 16.5 | 0 | 0.0 | 2 | 2.4 | 4 | 4.7 | 15 | 17.6 | 2 | 2.4 | 1 | 1.2 | 16 | 18.8 | 3 | 3.5 |
| 1998 | 80 | 13 | 16.3 | 2 | 2.5 | 8 | 10.0 | 19 | 23.8 | 0 | 0.0 | 1 | 1.3 | 6 | 7.5 | 5 | 6.3 | 2 | 2.5 | 5 | 6.3 | 15 | 18.8 | 4 | 5.0 |
| 1999 | 75 | 5 | 6.7 | 5 | 6.7 | 13 | 17.3 | 15 | 20.0 | 0 | 0.0 | 0 | 0.0 | 4 | 5.3 | 5 | 6.7 | 0 | 0.0 | 5 | 6.7 | 18 | 24.0 | 5 | 6.7 |
| 2000 | 52 | 7 | 13.5 | 3 | 5.8 | 12 | 23.1 | 10 | 19.2 | 1 | 1.9 | 1 | 1.9 | 1 | 1.9 | 2 | 3.8 | 0 | 0.0 | 3 | 5.8 | 8 | 15.4 | 4 | 7.7 |
| %*Change | 68 | 133 | | 200 | | 100 | | 25 | | ** | | ** | | 0 | | -33 | | ** | | 50 | | 33 | | 300 | |

| MISDEMEANOR OFFENSES AGAINST PERSONS | | | | | | | | | | | | | | | | | | | | | | | | | |
|--------------------------------------|-------|--------------|------|-----------|-----|---------|------|----------|------|----------|-----|----------|-----|--------|-----|---------|------|-------------|-----|--------|-----|------------|------|-----------|------|
| Year | Total | Asian Indian | | Cambodian | | Chinese | | Filipino | | Hawaiian | | Japanese | | Korean | | Laotian | | Pacific Is. | | Samoan | | Vietnamese | | Other API | |
| | No. | No. | %* | No. | %* | No. | %* | No. | %* | No. | %* | No. | %* | No. | %* | No. | %* | No. | %* | No. | %* | No. | %* | No. | %* |
| 1991 | 19 | 4 | 21.1 | 0 | 0.0 | 2 | 10.5 | 5 | 26.3 | 0 | 0.0 | 0 | 0.0 | 0 | 0.0 | 1 | 5.3 | 0 | 0.0 | 0 | 0.0 | 5 | 26.3 | 2 | 10.5 |
| 1992 | 24 | 1 | 4.2 | 0 | 0.0 | 2 | 8.3 | 4 | 16.7 | 0 | 0.0 | 0 | 0.0 | 0 | 0.0 | 2 | 8.3 | 1 | 4.2 | 2 | 8.3 | 11 | 45.8 | 1 | 4.2 |
| 1993 | 31 | 5 | 16.1 | 0 | 0.0 | 4 | 12.9 | 6 | 19.4 | 1 | 3.2 | 0 | 0.0 | 0 | 0.0 | 4 | 12.9 | 1 | 3.2 | 2 | 6.5 | 7 | 22.6 | 1 | 3.2 |
| 1994 | 39 | 7 | 17.9 | 2 | 5.1 | 6 | 15.4 | 9 | 23.1 | 2 | 5.1 | 1 | 2.6 | 1 | 2.6 | 1 | 2.6 | 0 | 0.0 | 0 | 0.0 | 7 | 17.9 | 3 | 7.7 |
| 1995 | 35 | 2 | 5.7 | 1 | 2.9 | 3 | 8.6 | 11 | 31.4 | 0 | 0.0 | 0 | 0.0 | 0 | 0.0 | 5 | 14.3 | 1 | 2.9 | 1 | 2.9 | 5 | 14.3 | 6 | 17.1 |
| 1996 | 47 | 10 | 21.3 | 2 | 4.3 | 3 | 6.4 | 10 | 21.3 | 0 | 0.0 | 1 | 2.1 | 3 | 6.4 | 6 | 12.8 | 0 | 0.0 | 0 | 0.0 | 8 | 17.0 | 4 | 8.5 |
| 1997 | 56 | 9 | 16.1 | 0 | 0.0 | 8 | 14.3 | 12 | 21.4 | 1 | 1.8 | 2 | 3.6 | 4 | 7.1 | 1 | 1.8 | 3 | 5.4 | 0 | 0.0 | 12 | 21.4 | 4 | 7.1 |
| 1998 | 43 | 7 | 16.3 | 1 | 2.3 | 4 | 9.3 | 7 | 16.3 | 1 | 2.3 | 1 | 2.3 | 1 | 2.3 | 6 | 14.0 | 0 | 0.0 | 4 | 9.3 | 2 | 4.7 | 9 | 20.9 |
| 1999 | 23 | 7 | 30.4 | 0 | 0.0 | 4 | 17.4 | 2 | 8.7 | 1 | 4.3 | 1 | 4.3 | 1 | 4.3 | 0 | 0.0 | 1 | 4.3 | 1 | 4.3 | 4 | 17.4 | 1 | 4.3 |
| 2000 | 39 | 5 | 12.8 | 3 | 7.7 | 10 | 25.6 | 5 | 12.8 | 0 | 0.0 | 1 | 2.6 | 3 | 7.7 | 2 | 5.1 | 0 | 0.0 | 1 | 2.6 | 6 | 15.4 | 3 | 7.7 |
| %*Change | 105 | 25 | | ** | | 400 | | 0 | | ** | | ** | | ** | | 100 | | ** | | ** | | 20 | | 50 | |

Source: Alameda County Juvenile Probation Department

*All percentages may not add up to 100 percent due to rounding.

**Indivisible by zero, number is undefined.

Table 18
Alameda County
Male Juvenile Drug Offenses by API Ethnic Group
1991 – 2000

| MALE FELONY DRUG | | | | | | | | | | | | | | | | | | | | | | | | |
|------------------|-------|--------------|----|-----------|----|---------|----|----------|----|----------|----|----------|----|--------|----|---------|-------------|--------|------------|-----|-----------|-----|----|--|
| Year | Total | Asian Indian | | Cambodian | | Chinese | | Filipino | | Hawaiian | | Japanese | | Korean | | Laotian | Pacific Is. | Samoan | Vietnamese | | Other API | | | |
| | No. | No. | %* | No. | %* | No. | %* | No. | %* | No. | %* | No. | %* | No. | %* | No. | %* | No. | %* | No. | %* | No. | %* | |
| 1991 | 7 | 1 | 14 | 0 | 0 | 1 | 14 | 1 | 14 | 0 | 0 | 0 | 0 | 0 | 0 | 1 | 14 | 1 | 14 | 1 | 14 | 1 | 14 | |
| 1992 | 7 | 0 | 0 | 2 | 29 | 3 | 42 | 2 | 29 | 0 | 0 | 0 | 0 | 0 | 0 | 0 | 0 | 0 | 0 | 0 | 0 | 0 | 0 | |
| 1993 | 14 | 1 | 7 | 0 | 0 | 2 | 14 | 3 | 21 | 1 | 7 | 0 | 0 | 0 | 0 | 1 | 7 | 0 | 0 | 1 | 7 | 5 | 35 | |
| 1994 | 17 | 3 | 18 | 2 | 12 | 1 | 6 | 3 | 18 | 1 | 6 | 0 | 0 | 1 | 6 | 4 | 24 | 0 | 0 | 0 | 0 | 1 | 6 | |
| 1995 | 12 | 1 | 9 | 1 | 9 | 0 | 0 | 1 | 9 | 0 | 0 | 0 | 0 | 0 | 0 | 5 | 42 | 1 | 9 | 0 | 0 | 1 | 9 | |
| 1996 | 12 | 3 | 25 | 1 | 8 | 0 | 0 | 2 | 17 | 0 | 0 | 0 | 0 | 0 | 0 | 1 | 8 | 1 | 8 | 1 | 8 | 2 | 17 | |
| 1997 | 16 | 2 | 13 | 1 | 6 | 1 | 6 | 4 | 25 | 0 | 0 | 1 | 6 | 0 | 0 | 0 | 0 | 0 | 0 | 1 | 6 | 4 | 25 | |
| 1998 | 24 | 2 | 8 | 0 | 0 | 0 | 0 | 6 | 25 | 0 | 0 | 2 | 8 | 2 | 8 | 8 | 33 | 0 | 0 | 0 | 0 | 2 | 8 | |
| 1999 | 20 | 4 | 20 | 2 | 10 | 5 | 25 | 2 | 10 | 0 | 0 | 0 | 0 | 0 | 0 | 3 | 15 | 0 | 0 | 0 | 0 | 3 | 15 | |
| 2000 | 27 | 2 | 7 | 2 | 7 | 5 | 19 | 3 | 11 | 0 | 0 | 0 | 0 | 0 | 0 | 7 | 26 | 1 | 4 | 0 | 0 | 5 | 19 | |
| %*Change | 286 | 100 | | ** | | 400 | | 200 | | ** | | ** | | ** | | 600 | ** | -100 | 400 | | 100 | | | |

| MALE MISDEMEANOR DRUG | | | | | | | | | | | | | | | | | | | | | | | | |
|-----------------------|-------|--------------|----|-----------|----|---------|----|----------|----|----------|----|----------|----|--------|----|---------|-------------|--------|------------|-----|-----------|-----|----|--|
| Year | Total | Asian Indian | | Cambodian | | Chinese | | Filipino | | Hawaiian | | Japanese | | Korean | | Laotian | Pacific Is. | Samoan | Vietnamese | | Other API | | | |
| | No. | No. | %* | No. | %* | No. | %* | No. | %* | No. | %* | No. | %* | No. | %* | No. | %* | No. | %* | No. | %* | No. | %* | |
| 1991 | 4 | 0 | 0 | 0 | 0 | 2 | 50 | 0 | 0 | 0 | 0 | 0 | 0 | 0 | 0 | 0 | 0 | 0 | 0 | 0 | 0 | 2 | 50 | |
| 1992 | 10 | 3 | 30 | 0 | 0 | 0 | 0 | 4 | 40 | 0 | 0 | 1 | 10 | 0 | 0 | 0 | 0 | 0 | 0 | 0 | 0 | 2 | 20 | |
| 1993 | 15 | 1 | 7 | 1 | 7 | 0 | 0 | 3 | 20 | 0 | 0 | 0 | 0 | 1 | 7 | 0 | 0 | 0 | 0 | 0 | 0 | 2 | 13 | |
| 1994 | 17 | 4 | 24 | 1 | 6 | 1 | 6 | 3 | 18 | 1 | 6 | 1 | 6 | 0 | 0 | 1 | 6 | 0 | 0 | 1 | 6 | 3 | 18 | |
| 1995 | 28 | 9 | 32 | 0 | 0 | 1 | 4 | 6 | 21 | 0 | 0 | 0 | 0 | 0 | 0 | 4 | 14 | 0 | 0 | 1 | 4 | 3 | 11 | |
| 1996 | 26 | 3 | 12 | 0 | 0 | 2 | 8 | 8 | 31 | 1 | 4 | 0 | 0 | 4 | 15 | 1 | 4 | 0 | 0 | 1 | 4 | 0 | 0 | |
| 1997 | 41 | 0 | 0 | 0 | 0 | 3 | 7 | 12 | 29 | 4 | 10 | 1 | 2 | 0 | 0 | 2 | 5 | 2 | 5 | 0 | 0 | 5 | 12 | |
| 1998 | 45 | 3 | 7 | 1 | 2 | 2 | 4 | 6 | 13 | 4 | 9 | 3 | 7 | 4 | 9 | 6 | 13 | 2 | 4 | 1 | 2 | 10 | 22 | |
| 1999 | 18 | 4 | 22 | 0 | 0 | 3 | 17 | 2 | 11 | 1 | 6 | 0 | 0 | 1 | 6 | 1 | 6 | 0 | 0 | 0 | 0 | 4 | 22 | |
| 2000 | 26 | 4 | 15 | 0 | 0 | 4 | 15 | 3 | 12 | 0 | 0 | 2 | 8 | 1 | 4 | 1 | 4 | 0 | 0 | 0 | 0 | 4 | 15 | |
| %*Change | 550 | ** | ** | ** | | 100 | | ** | | ** | | ** | | ** | | ** | ** | ** | ** | ** | ** | ** | 71 | |

Source: Alameda County Juvenile Probation Department
 *All percentages may not add up to 100 percent due to rounding.
 **Indivisible by zero, number is undefined.

X. API Recidivism

Table 19 below reveals some interesting information about recidivism for API youths. For the purposes of this analysis, we took a cohort of youths who were referred to the Probation Department in 1998 and determined the percentage of those who committed another offense that resulted in a referral to the Probation Department at 6, 12, and 24 months subsequent to their original offense in 1998. The data reveal that 17 percent had another referral to probation six months later; within two years, slightly more than a quarter (27 percent) had another official offense occurrence.

Similar to the arrest trends displayed earlier, there were notable differences across the diverse API ethnic group with regard to recidivism. In particular, the Southeast Asian population (i.e., Cambodian, Laotian, and Vietnamese), as well as the Samoan and Pacific Islander population (although small sample size may exaggerate figures), had higher recidivism as compared to other API groups. Within two years, greater than 40 percent of Cambodians, Laotians, and Pacific Islanders recidivated. Cambodian and Laotian youths also reoffended with greater seriousness (see Table 20).

In a separate analysis not shown here, the average time to first reoffense for the API group was about 182 days (slightly higher as compared to figure for total juvenile population at 170 days), with an average of three reoffenses per year. Thus, among API youths who committed another offense, they did so within six months.

Consistent with previous gender comparisons, API males also had higher reoffense figures compared to API females. More than a quarter had another referral to probation in two years, versus 14 percent for API females (see Table 19).

There was also variation by the original charge offense. Those who were already on probation and their first offense in 1998 was a probation violation as well as those whose original offense type in 1998 was a felony “other” recidivated at the highest level (see Table 19).

Table 19
Alameda County
6-Month, 12-Month, and 24-Month Recidivism
Asian Pacific Islander Juvenile Arrest Population
1998

| | 6 Months % Reoffended | 12 Months % Reoffended | 24 Months % Reoffended |
|----------------------|--------------------------|---------------------------|---------------------------|
| Total API | 17 | 23 | 27 |
| Ethnicity | | | |
| Asian Indian | 14 | 21 | 25 |
| Cambodian | 25 | 36 | 42 |
| Chinese | 13 | 17 | 21 |
| Filipino | 16 | 21 | 25 |
| Hawaiian | 23 | 32 | 32 |
| Japanese | 13 | 25 | 25 |
| Korean | 14 | 20 | 22 |
| Laotian | 26 | 37 | 44 |
| Other Asian | 7 | 10 | 13 |
| Pacific Islander | 38 | 46 | 46 |
| Samoan | 15 | 27 | 30 |
| Vietnamese | 20 | 27 | 31 |
| Sex | | | |
| Female | 7 | 12 | 14 |
| Male | 20 | 26 | 31 |
| Original Charge Type | | | |
| Felony Drug | 19 | 28 | 35 |
| Felony Person | 15 | 25 | 27 |
| Felony Property | 19 | 26 | 29 |
| Felony Weapons | 9 | 17 | 19 |
| Felony Other | 39 | 39 | 50 |
| Misdemeanor Drug | 10 | 19 | 22 |
| Misdemeanor | 14 | 21 | 25 |
| Person | | | |
| Misdemeanor | 9 | 13 | 17 |
| Property | | | |
| Misdemeanor | 11 | 14 | 28 |
| Weapons | | | |
| Misdemeanor Other | 11 | 18 | 24 |
| Probation Violation | 30 | 38 | 41 |

Source: Alameda County Juvenile Probation Department

Table 20
Alameda County
6-Month Recidivism by Offense Type for
Asian Pacific Islander Juvenile Arrest Population
1998

| | Felony % Reoffended | Misdemeanor % Reoffended | Probation Violation % Reoffended |
|------------------|------------------------|-----------------------------|--|
| Total API | 9 | 4 | 4 |
| Ethnicity | | | |
| Asian Indian | 7 | 5 | 2 |
| Cambodian | 17 | 3 | 5 |
| Chinese | 8 | 3 | 2 |
| Filipino | 7 | 7 | 3 |
| Hawaiian | 10 | 10 | 3 |
| Japanese | 0 | 6 | 6 |
| Korean | 5 | 8 | 1 |
| Laotian | 19 | 1 | 6 |
| Other Asian | 2 | 3 | 2 |
| Pacific Islander | 8 | 23 | 8 |
| Samoan | 6 | 9 | 0 |
| Vietnamese | 11 | 3 | 6 |
| Sex | | | |
| Female | 1 | 4 | 2 |
| Male | 11 | 5 | 4 |

Source: Alameda County Juvenile Probation Department

XI. Conclusion

In summary, these analyses reflect the flow of APIs into the juvenile justice system in one particular county with a large API population. Taken as an overall group (i.e., Asians in general), it appears that APIs are underrepresented in crime statistics. Compared to their population, they have few arrests, and hence one of the lowest arrest rates. However, disaggregated data and analyses reveal a slightly different picture for particular ethnic groups. Most disturbingly, Samoans and Southeast Asians (e.g., Vietnamese, Laotians, and Cambodians in particular) have higher arrest and recidivism rates as compared to most other racial and ethnic groups in Alameda County.

It also illustrates that increases or decreases in arrest changes over the past decade vary by groups. For instance, Black and Hispanic arrest rates have decreased at higher percentages as compared to Whites and APIs.

Gender differences were also reflected in the analyses and presentation, which underscores the continual need to disaggregate data by gender. While males still outnumber females in terms of overall arrests and percent contributions, females are flowing into the juvenile justice system at an alarming rate, both nationally and as evidenced in this Alameda County data. API females, in particular, had the highest percent change in arrests within the last decade, higher than Black, Hispanic, or White females.

As a whole, APIs are a resilient group, achieving and succeeding in many aspects and venues despite facing numerous challenges and obstacles (e.g., war, displacement, cultural conflict). The more than forty different API ethnic groups have had different entry, numbers, and level of entrenchment in American society. The issues and complexity as to why some individuals behave outside the norms of expected behavior and come to the attention of the authorities will continue to be explored by researchers and interested individuals alike. In most national studies and surveys on delinquency, relevant factors for APIs such as culture conflict, ethnic identity, conditions of immigration, length of residency, etc., have either been egregiously omitted or insufficiently considered in the equation for delinquency. What has been revealed in this report is that some groups appear to be disproportionately represented in juvenile justice statistics and may need more attention and assistance. It suggests foremost that APIs are not all the same, and that attention to ethnic as well as gender differences is paramount.

XII. References

Agin, Rhoda L., Colleen Fong, Sakai Sterling, Asoke Basu. Guide to the Pronunciation of Asian Pacific Names. Asian American Educators' Council. California State University, Hayward, 1992.

Louie, Emma Woo. Chinese American Names: Tradition and Transition. McFarland Publications, Jefferson, N.C., 1998.

Snyder, Howard N. Juvenile Arrests 1999. OJJDP Juvenile Justice Bulletin. December 2000. U.S. Department of Justice.

Internet sources for Asian names:

<http://surnamesearch.com>

http://bachhong-truongdinh.tripod.com/HCM_city/id1.html

<http://www.geocities.com/Heartland/Acres/4307/lastname.htm>

http://www.surnames.com/databases/Country_Select.asp

<http://www.flick.com/onomastikon/Orient/Indochina/Cambodia.htm>